



DENSITY AND VELOCITY RELATIONSHIPS FOR DIGITAL SONIC AND DENSITY LOGS FROM COASTAL WASHINGTON AND LABORATORY MEASUREMENTS OF OLYMPIC PENINSULA MAFIC ROCKS AND GREYWACKES

by Thomas M. Brocher¹ and Nikolas I. Christensen²

Open-File Report 01-264

2001

This report is preliminary and has not been reviewed for conformity with U.S. Geological Survey editorial standards or with the North American Stratigraphic Code. Any use of trade, firm, or product names is for descriptive purposes only and does not imply endorsement by the U.S. Government.

**U.S. DEPARTMENT OF THE INTERIOR
U.S. GEOLOGICAL SURVEY**

¹ U.S. Geological Survey, 345 Middlefield Road, M/S 977, Menlo Park, CA 94025

² Dept. of Geology and Geophysics, 1215 W. Dayton St., University of Wisconsin,
Madison, WI 53706

CONTENTS

Abstract	1
Introduction	4
Well Log Analysis	4
Borehole Lithologies	5
Comments on the Well Log Data	6
Travel Time Curves	7
Laboratory Measurements	7
Density and Velocity Relationships	7
Earthquake Hazard Implications	8
Data Availability	9
Acknowledgments	9
References	9

TABLE

Table 1. Oil test well location and logging history	10
Table 2. Stratigraphy in the oil test wells	11
Table 3. Linear regression of the sonic velocity logs	12
Table 4. Linear regression of the density logs	14
Table 5. Compressional-wave measurements of Olympic Peninsula mafic rocks	16
Table 6. Shear-wave measurements of Olympic Peninsula mafic rocks	16
Table 7. Vp/Vs ratios of Olympic Peninsula mafic rocks	17
Table 8. Poisson's ratio of Olympic Peninsula mafic rocks	17
Table 9. Compressional-wave measurements of Olympic Peninsula greywackes	18
Table 10. Shear-wave measurements of Olympic Peninsula greywackes	18
Table 11. Vp/Vs ratios of Olympic Peninsula greywackes	18
Table 12. Poisson's ratio of Olympic Peninsula greywackes	19
Table 13. Average Formation sonic velocities and densities	19
Table 14. Compressional-wave reflection coefficients	19

FIGURES

Figure 1. Map showing locations of oil test wells analyzed within this report	20
Figure 2. Sonic velocities and densities for Shell Oil OCA Hogan 1-13 and Shell Oil Hogan 1-8 wells	21
Figure 3. Sonic velocities and densities for Shell Oil Grays Harbor County OCA 1-11 and Ocean City Land Development Co. 1-14 wells	22
Figure 4. Sonic velocities and densities for Shell Oil John Sampson 1-15 and Shell Oil Johns Sampson 2-15, and El Paso Prod., Grays Harbor County 27-1 wells	23
Figure 5. Sonic velocities and densities for Shell Oil Luse 23 and Minard OCA 1-34 wells	24
Figure 6. Sonic velocities and densities for Shell Oil Grays Harbor County LHA 1-15 and Trambitas OCA 1-28 wells	25
Figure 7. Sonic velocities and densities for Shell Oil Grays Harbor County 1-35 and El Paso Production Grays Harbor County 36-1 wells	26
Figure 8. Sonic velocities and densities for Development Assoc., M A Baker 1-30, Development Assoc., Carlisle 1-23, and Humble Oil and Refining Everett Trust and Savings Bank ETR et al. B-1 wells	27

Figure 9.	Sonic velocities and densities for Humble Oil and Refining Ollar State 1 and Shell Oil McCleave 1-33 wells	28
Figure 10.	Sonic velocities and densities for and Hoh River Oil Co. Barlow 1 El Paso Prod. Lacey No. 22-1, and Belco Petroleum Corp., Milwaukee Land 1-1 wells	29
Figure 11.	Densities for Eastern Petroleum Services Sniffer Forks 1 well	30
Figure 12.	Calculated two-way travel time for Shell Oil Hogan 1-13, Hogan 1-8, Grays Harbor County 1-11, and for Ocean City LD C 1-14 wells	31
Figure 13.	Calculated two-way travel time for Shell Oil John Sampson 1-15, Johns Sampson OCA 2-15, Luse 1-23, and Minard OCA 1-34 wells	32
Figure 14.	Calculated two-way travel time for Shell Oil Grays Harbor County LHA 1-15, Shell Oil Trambitas OCA 1-28, Shell Oil Grays Harbor County 1-35, Humble Oil and Refining Ollar State 1	33
Figure 15.	Calculated two-way travel time for Humble Oil and Refining State ETR et al B-1, Shell Oil McCleave 1-33, Hoh River Oil Co. Barlow 1	34
Figure 16.	Map of the Olympic Peninsula showing the location of rock samples measured in the laboratory	35
Figure 17.	Compressional-wave, shear-wave, V_p/V_s ratio, and Poisson's ratio versus confining pressure for Olympic Peninsula mafic rocks (mainly Crescent Formation volcanics)	36
Figure 18.	Compressional-wave, shear-wave, V_p/V_s ratio, and Poisson's ratio versus confining pressure for Olympic Peninsula	37
Figure 19.	Average sonic velocities and densities for the well logs and laboratory measurements compiled by this study and those of Brocher and Ruebel (1998)	38
Figure 20.	RMS misfit of Gardner's coefficient for the four rock suites investigated here and by Brocher and Ruebel (1998)	39

ABSTRACT

Three-dimensional velocity models for the basins along the coast of Washington and in Puget Lowland provide a means for better understanding the lateral variations in strong ground motions recorded there. We have compiled 16 sonic and 18 density logs from 22 oil test wells to help us determine the geometry and physical properties of the Cenozoic basins along coastal Washington. The depth ranges sampled by the test well logs fall between 0.3 and 2.1 km. These well logs sample Quaternary to middle Eocene sedimentary rocks of the Quinault Formation, Montesano Formation, and Hoh rock assemblage. Most (18 or 82%) of the wells are from Grays Harbor County, many of these are from the Ocean City area. These Grays Harbor County wells sample the Quinault Formation, Montesano Formation, and frequently bottom in the Hoh rock assemblage. These wells show that the sonic velocity and density normally increase significantly across the contacts between the Quinault or the Montesano Formations and the Hoh rock assemblage. Reflection coefficients calculated for vertically traveling compressional waves from the average velocities and densities for these units suggest that the top of the Hoh rock assemblage is a strong reflector of downward propagating seismic waves: these reflection coefficients lie between 11 and 20%. Thus this boundary may reflect seismic energy upward and trap a substantial portion of the seismic energy generated by future earthquakes within the Miocene and younger sedimentary basins found along the Washington coast.

Three wells from Jefferson County provide data for the Hoh rock assemblage for the entire length of the logs. One well (Eastern Petroleum Sniffer Forks #1), from the Forks area in Clallam County, also exclusively samples the Hoh rock assemblage. This report presents the locations, elevations, depths, stratigraphic and other information for all the oil test wells, and provides plots showing the density and sonic velocities as a function of depth for each well log. We also present two-way travel times for 15 of the wells calculated from the sonic velocities. Average velocities and densities for the wells having both logs can be reasonably well related using a modified Gardner's rule, with $\rho = 1825v^{1/4}$, where ρ is density in kg/m^3 and v is the sonic velocity in km/s . In contrast, a similar analysis of published well logs from Puget Lowland is best matched by a Gardner's rule of $\rho = 1730v^{1/4}$, close to the $\rho = 1740v^{1/4}$ proposed by Gardner et al. (1974).

Finally, we present laboratory measurements of compressional-wave velocity, shear-wave velocity, and density for 11 greywackes and 29 mafic rocks from the Olympic Peninsula and Puget Lowland. These units have significance for earthquake hazard investigations in Puget Lowland as they dip eastward beneath the Lowland, forming the "bedrock" beneath much of the lowland. Average V_p/V_s ratios for the mafic rocks, mainly Crescent Formation volcanics, lie between 1.81 and 1.86. Average V_p/V_s ratios for the greywackes from the accretionary core complex in the Olympic Peninsula show greater scatter but lie between 1.77 and 1.88. Both the Olympic Peninsula mafic rocks and greywackes have lower shear-wave velocities than would be expected for a Poisson solid ($V_p/V_s=1.732$). Although the P-wave velocities and densities in the greywackes can be related by a Gardner's rule of $\rho = 1720v^{1/4}$, close to the $\rho = 1740v^{1/4}$ proposed by Gardner et al. (1974), the velocities and densities of the mafic rocks are best related by a Gardner's rule of $\rho = 1840v^{1/4}$. Thus, the density/velocity relations are similar for the Puget Lowland well logs and greywackes from the Olympic Peninsula. Density/velocity relations are similar for the Washington coastal well logs and mafic rocks from the Olympic Peninsula, but differ from those of the Puget Lowland well logs and greywackes from the Olympic Peninsula.

INTRODUCTION

We present data from 16 sonic and 18 density logs from 22 oil test wells to categorize the sonic velocities and densities of Cenozoic sedimentary basins in coastal Washington (Fig. 1).

We also present laboratory measurements of compressional-wave and shear-wave velocities for 40 basement rocks outcropping in the Olympic Peninsula and Puget Lowland. These measurements were made on twenty-nine mafic rocks (mainly Crescent Formation volcanics) and eleven greywackes at room temperatures and confining pressures up to 1000 MPa (10 Kbar). These measurements represent the first laboratory measurements of the shear-wave velocities for these important bedrock units.

We use these well log and laboratory measurements to examine velocity-density relationships for rock suites found in coastal Washington, the Olympic Peninsula, and Puget Lowland. For two of the suites of rocks investigated here, we note significant departures of these measurements from the density/velocity relationship proposed for sedimentary rocks by Gardner et al. (1974).

Finally, we use the average velocity and densities determined for sedimentary units in coastal Washington (the Quinault and Montesano Formations and the Hoh rock assemblage) to obtain estimates of the average seismic reflection coefficients in the sedimentary basins found along the coast of Washington. These estimates suggest that seismic waves might be efficiently trapped in the basins during future large earthquakes in the Pacific Northwest, enhancing the ground motions for the basins relative to nearby bedrock sites.

WELL LOG ANALYSIS

We first report the new sonic and density logs for the 22 oil test wells along coastal Washington. The locations, elevations, and depths of the wells, as well as the operator, lease name, well number, and completion year are presented in Table 1: the wells in this table are ordered by latitude from south to north. The well information in Table 1 is taken from the Well History Control System (WHCS) One-line File, an on-line digital well-log database leased from Petroleum Information by the USGS Office of Energy Resources at Denver. Table 1 provides information on the type of sonic and density tool used to make the log, as well as the other tools which were run simultaneously with these tools (normally caliper, spontaneous potential, and gamma-ray). Only a few of the sonic logs were made with older, short tools, with short spans between the source and receivers. Stratigraphic control is available for 21 of the 22 wells [Rau and McFarland, 1982; Palmer and Lingley, 1989].

Sonic and density logs were hand digitized at non-uniform intervals between 0.3 and 30 m to capture the significant variations of the logs with depth for frequencies up to 20 Hz. The average sampling interval was 1 to 3 m. The sampling interval was adequate to estimate linear trends in the data over these intervals. We note that our sampling interval was not intended and is not sufficiently dense for the calculation of high-frequency (say >50 Hz) synthetic seismograms. For higher-frequency synthetics, it will be necessary to redigitize the logs with a finer sampling interval.

For the sonic logs, we picked transit times ($\mu\text{s}/\text{ft}$) as a function of depth down the well. For the gamma-gamma density logs, we picked bulk density in kg/m^3 as a function of depth down the well. For the neutron density porosity logs, we converted the logged density porosity (ϕ) to formation density (ρ_{fd}) using $\rho_{\text{fd}} = \rho_m + (\rho_f - \rho_m)\phi$, where the matrix density $\rho_m = 2650 \text{ kg}/\text{m}^3$, and the fluid density $\rho_f = 1000 \text{ kg}/\text{m}^3$ [Ellis, 1987]. All of the logs analyzed here are plotted at a scale of 30.49 m:5.08 cm (100 feet:2.5 inches) or 30.49 m:2.54 cm (100 feet:1 inch). Depths are measured from an arbitrary reference datum, normally the Kelley Bushing (KB), located 3.65 m (12 feet) above ground level. The downhole depths reported here have not been corrected for this small upward shift. Cased intervals of the wells and sections identified on the logs as having cycle skipping problems were not digitized. In some cases data from the logs were ignored: these data were associated with washouts, thick mudcake, invasion of drill fluids

or large deviations from the general trend of density and sonic values having very limited depth extent, generally less than a few meters [Ellis, 1987]. The digitized sonic log data were converted from transit times to velocities (m/s) and depths from feet to meters for both the sonic and density logs. Plots are presented in Figures 2 to 11 showing seismic velocities and densities as a function of depth for each well.

We have calculated two-way travel times from the sonic logs and displayed these in Figures 12 to 15. This calculation required us to extrapolate sonic velocities to the surface. In one case, Belco Petroleum Corp. Milwaukee Land 1-1, the depth to the first measured sonic velocity was judged to be too great to extrapolate the sonic velocity to the surface.

BOREHOLE LITHOLOGIES

The following discussion of the borehole lithologies (Table 2) is summarized from Rau and McFarland (1982) and Palmer and Lingley (1989), who described the lithologies in the wells reported here. The reader is referred to these references for a more detailed discussion of the units sampled in the boreholes.

Hoh rock assemblage

The Hoh rock assemblage is composed of middle Eocene to middle Miocene, deep-water marine rocks thought to have been accreted to North America during the subduction process. Many of these rocks are turbidites and are mainly greywacke clastic sedimentary rocks. In the Forks area, most of the Hoh rock assemblage consists of thick sequences of siltstone, claystone, and sandstone. Alternations of these lithologies may explain the undulations observed in sonic and density logs of this formation.

Quinault and Montesano Formations

The Quinault Formation rests unconformably on the Hoh rock assemblage. Rau and McFarland (1982) discuss the uncertainty in the age of this unit, which includes late Miocene and Pliocene members. Rau and McFarland (1982) use the Quinault Formation for the sedimentary rocks of this age lying unconformably on the Hoh rock assemblage. Bergen and Bird (1972) and Palmer and Lingley (1989) believe most of these rocks to be late Miocene in age and refer to them as the Montesano Formation. Palmer and Lingley (1989) group rocks above the Montesano Formation and call them undifferentiated Quaternary deposits and Quinault Formation. For four of the Ocean City wells studied here we show the Montesano Formation as described by Palmer and Lingley (1989); for the remainder of the 22 wells we follow the formation identification provided by Rau and McFarland (1982).

From top to bottom the Montesano Formation contains a thick siltstone, sandstone, and claystone member. Similarly, the Quinault Formation identified by Rau and McFarland (1982) has claystone, sandstone, and siltstone members, which have fairly distinctive signatures in the sonic and density logs.

Quaternary Deposits

Few, if any, of the well logs sample Quaternary deposits, which are inferred to overlie the sampled units. The Shell John's 1-15 and Shell Sampson Johns OCA 2-15 wells may sample Quaternary deposits at the tops of the logs, but the available formation identifications are not definitive (Table 2).

COMMENTS ON THE WELL LOG DATA

We superimposed the formation tops from Table 2 onto the well logs shown in this report. Often these formation contacts correspond to significant changes in the sonic velocity and density, and/or in the character of these logs.

In Table 3 we show average velocities and linear regressions over intervals corresponding to known or inferred formations. Similar averages and linear regressions on the density log data are shown in Table 4. As anticipated, average sonic velocities (generally 1400 to 2000 m/s) and densities (2000 kg/m^3) in the Quaternary deposits are significantly lower than those of underlying Tertiary sedimentary rocks (Tables 3 and 4). The contact between the Hoh rock assemblage and overlying Tertiary sedimentary rocks represents a large (about 0.3 km/s) increase in sonic velocity (Table 3).

Hoh rock assemblage

Long sections of the Hoh rock assemblage were logged at three wells near Joe Creek in Greys Harbor County as well as at four northernmost wells analyzed in this study (Figures 1, 10, and 11). In the Joe Creek area (Figure 1; T20N, R12W), the well logs show a substantial decrease in density and sonic velocity at a depth of about 1000 m (3280 ft). The logs for the four northernmost wells in Jefferson and Clallam Counties (Figure 10) show more minor variations with depth, particularly with respect to the density. The high scatter in sonic velocities in the Belco Petroleum Milwaukee Land 1-1 well (Figure 10) are due to cyclic skipping. Density logs for the El Paso Lacey No. 22-1 and Belco Petroleum Milwaukee Land 1-1 wells show a well-defined increase in density with depth (Figure 10).

Quinault and Montesano Formations

The Quinault Formation is characterized by low sonic velocities and densities. Sonic velocities generally lie between 2 and 2.5 km/s; densities generally lie between 2100 and 2300 kg/m^3 . In many of the wells there is a distinctive unit within the Quinault Formation that is typified by rapid fluctuations in sonic velocity and density. This unit contains pebbles in a sandstone matrix. The rapid fluctuations in the logs are caused by sampling the higher sonic velocities and densities of the pebbles versus the lower-velocity and lower density matrix. This conglomeratic unit is especially well developed in Shell OCA Hogan #1-13 (Figure 2), but is also seen in the Shell Hogan #1-8 (Fig. 2), Shell Grays Harbor Co. OCA #1-11 (Fig. 3), Shell Ocean City Land Development Co. #1-14 (Fig. 3), Shell Sampson Johns OCA #2-15 (in the Montesano Formation) (Fig. 4), Shell Luse #1-23 (Fig. 5), and Shell Grays Harbor Co. #1-35 (Fig. 7) wells.

Within the Quinault and Montesano Formations, the claystone member generally has the lowest velocities and densities and the sandstone member generally has the highest velocities and densities. The low densities and sonic velocities of the claystone member of the Quinault Formation are well displayed at the Shell Ocean City Land Development Co. #1-14 well (Figure 3). The higher seismic velocities and densities of the sandstone member are typified by the Shell John's #1-15 and Shell Sampson Johns OCA #2-15 wells (Figure 4).

Quaternary Deposits

Only the Shell John's 1-15 and Shell Sampson Johns OCA 2-15 wells may sample Quaternary deposits at the tops of the logs (Figure 4). In these wells undifferentiated Quaternary deposits and Quinault Formation have velocities between 1.5 and 2.0 km/s (Figure 4). The higher velocities in the John's #1-15 well at about 300 m depth correspond to a pebbly sandstone

member, most likely of the Quinault Formation (Rau and McFarland, 1982). No density logs were made for these intervals.

TRAVEL TIME CURVES

Individual travel time curves calculated for the wells having sonic well logs are shown in Figures 12 to 15. The calculated travel time curves are summarized in Figure 15. For the majority of the wells the curves plot closely together and nearly intersect the 1 second mark at a depth of 1000 m, consistent with an average velocity of 2 km/s to this depth. One curve, for the Shell-Minard 1-34 well, yields consistently larger travel times, consistent with its lower velocity (Figure 15). Both the travel time curve and sonic velocities are anomalous at the Shell-Minard 1-34 relative to nearby sites. The sonic log at Shell-Minard 1-34 was not compensated, and it may be possible that the sonic velocities measured there are systematically too low. [An alternative explanation is that the interval transit time scale was incorrectly read for this well.]

In contrast to these wells in Grays Harbor County, the travel time curves calculated for the Hoh River Barlow No. 1 (Figure 15) and Humble Oil Ollar State No. 1 (Figure 14) wells yield smaller travel times at all depths sampled. These smaller travel times are consistent with the higher sonic velocities found in the wells associated with the Hoh rock assemblage.

LABORATORY MEASUREMENTS

Laboratory determined velocities for 40 basement rocks outcropping in the Olympic Peninsula and Puget Lowland provide the first measurements of shear wave velocities for the Crescent Formation volcanics and greywackes in the Olympic accretionary core complex (Figure 16). Brocher et al. [2001] showed the compressional-wave velocity as a function of confining pressure for these rocks, but did not present the shear-wave velocity information, nor did they describe the variability of the measurements (summarized by Tables 5 to 12).

The eleven greywackes were taken from the accretionary wedge of the Olympic core complex; the 29 mafic samples are mainly basalts from the Crescent Formation (Figure 16). Mafic samples OL-10 and OL-15 represent gabbros within the Crescent Formation; the other mafic samples are basalts. Samples were field oriented by their bedding and flow structure. Velocities were measured in a hydrostatic pressure apparatus at room temperature using a pulse transmission technique described by Christensen [1985]. The laboratory data in Tables 5-12 and Figures 17 and 18 are uncorrected for increasing temperature in the crust, which can significantly lower the velocities in the lower crust (corrections are approximately -0.02 to -0.06 km/s per 100°C increase in temperature [Christensen, 1979]). Mean P-wave velocities for the two different rock suites at almost all confining pressures differ by at least 1 km/s; even the standard deviations of the velocities for the two suites are distinct (Figures 17 and 18). Mean S-wave velocities for the mafic rocks and greywackes differ less significantly. We have also plotted V_p/V_s and Poisson's ratio as a function of confining pressure for the two rock suites.

The V_p/V_s ratio for both the Olympic mafic rocks and greywackes are higher than average than would be expected for a Poisson solid ($V_p/V_s=1.732$). Thus, the shear wave velocities expected for these lithologies are lower than might be predicted from their P-wave velocity assuming a Poisson's ratio of 0.25. The V_p/V_s ratio shows relatively little sensitivity to confining pressure for the mafic rocks, but increases more significantly for the greywackes.

DENSITY AND VELOCITY RELATIONSHIP

Gardner et al. (1974) proposed an empirical relationship, based on borehole measurements, between sonic velocity and density in sedimentary rocks. The rule proposed by Gardner et al. (1974) is $\rho = 1740v^{1/4}$, where ρ is density in kg/m^3 and v is the sonic velocity in

km/s. For the purpose of discussion, we will refer to the coefficient multiplying the factor of $v^{1/4}$ as Gardner's coefficient.

In Figure 19 we plot average compressional-wave velocities and densities for the laboratory measurements of Olympic Peninsula greywackes and mafic rocks at 100 MPa (Tables 5 and 9), for the wells in Coastal Washington reported here, and in Puget Lowland as reported by Brocher and Ruebel (1998) are plotted in Figure 19. We determined the Gardner's coefficient for each suite of rocks by minimizing the misfit between the observed and calculated density (Figure 20). For each suite of rocks the Gardner's coefficient was determined from a well-defined minima in the root-mean-square (RMS) curves of misfit versus Gardner's coefficient (Figure 20).

P-wave velocities and densities of the Olympic Peninsula greywackes and well log data sampling sedimentary rocks in the Puget Lowland (Brocher and Ruebel, 1998) are best fit by Gardner's coefficients of 1720 and 1730, respectively (Figure 20). These values are very close to the coefficient of 1740 proposed for sedimentary rocks by Gardner et al. (1974).

In contrast, the velocities and densities for the Washington Coast wells and Olympic Peninsula mafic rocks are best fit by much higher Gardner's coefficients of 1835 and 1840, respectively (Figures 19 and 20). These coefficients are significantly higher than the value of 1740 determined by Gardner et al. (1974) for sedimentary rocks.

Figure 20 demonstrates that there are significant differences between the Olympic Peninsula greywackes and mafic rocks and between the Puget Lowland and the Coastal Washington sedimentary rocks measured in the sonic and density logs.

To what can we ascribe the high Gardner's coefficient needed for the sedimentary rocks sampled in the coastal Washington well logs? Figure 20 suggests that the high Gardner's coefficient required for the coastal Washington wells may result from the inclusion of Olympic mafic rocks within the Quinault and Montesano Formations and in the Hoh rock assemblage.

EARTHQUAKE HAZARDS IMPLICATIONS

The low sonic velocities and densities within the Quinault and Montesano Formations and the abrupt increase of these parameters in the underlying Hoh rock assemblage suggest that strong ground motions along the coast will be amplified due to the presence of these formations.

Reflection coefficients calculated for vertically traveling compressional waves were calculated from

$$R_{pp} = (v_2\rho_2 - v_1\rho_1) / (v_2\rho_2 + v_1\rho_1) \quad (1)$$

where v is the sonic velocity and ρ is the density, and 1 represents the upper layer and 2 the bottom layer.

Reflection coefficients (Table 14) calculated from the average velocities and densities for these units (Table 13) suggest that the top of the Hoh rock assemblage is a strong reflector of downward propagating seismic waves: these reflection coefficients lie between 11 and 20%. The magnitudes of these coefficients are all consistent with strong seismic reflectors. Thus this boundary may reflect upwards and trap a substantial portion of the seismic energy generated by future earthquakes within the Miocene and younger sedimentary basins found along the Washington coast. The largest reflection coefficients (20%) would be expected for the case when Quaternary deposits directly overlie the Hoh rock assemblage.

Although we have calculated compressional-wave reflection coefficients, we believe that these are appropriate for shear-waves as well. If the V_p/V_s ratio is constant for these rocks, then R_{ss} should be identical to R_{pp} . If V_p/V_s increases with formation age and/or depth, then R_{ss} would be higher than the R_{pp} calculated here.

DATA AVAILABILITY

The densities, seismic velocities, and two-way travel times shown in Figures 2 to 15 and Tables 5 to 12 are available in Excel5 spreadsheets using anonymous ftp (swave.wr.usgs.gov at /pub/outgoing/brocher)

ACKNOWLEDGEMENTS

Zenon Valin, USGS, kindly performed a search of a digital database providing well locations and other well information. Larry Beyer, USGS, made many useful suggestions for digitizing the well log data. Rick Blakely, USGS, reviewed an earlier version of this report. Pat McCrory provided a copy of Figure 1, modified here.

This work was supported by the National Earthquake Hazards Reduction Program.

REFERENCES CITED

- Bergen, F.W., and Bird, K.J., 1972, The biostratigraphy of the Ocean City area, Washington: Proceedings of the Pacific Coast Miocene Biostratigraphic Symposium: presented at the 47th Annual Pacific Section S.E.P.M. convention, March 9-10, 1972, Bakersfield, California, p. 173-191.
- Brocher, T.M. and Ruebel, A.L., 1998, Compilation of 29 sonic and density logs from 23 oil test wells in western Washington State, U.S. Geological Survey Open-File Report 98-249, 41 p.
- Brocher, T.M., T. Parsons, R.A. Blakely, N.I. Christensen, M.A. Fisher, R.E. Wells, and the SHIPS Working Group, 2001, Upper crustal structure in Puget Lowland, Washington: Results from 1998 Seismic Hazards Investigation in Puget Sound, *J. Geophys. Res.*, 106, 13,541-13,564.
- Christensen, N.I., 1979, Compressional wave velocities in rocks at high temperature and pressures, critical thermal gradients and crustal low-velocity zones, *J. Geophys. Res.*, 84, 6849-6857.
- Christensen, N.I., 1985, Measurements of dynamic properties of rock at elevated pressures and temperatures, in *Measurements of Rock Properties at Elevated Pressures and Temperatures*, edited by H. J. Pincus and E. R. Hoskins, pp. 93-107, American Society for Testing and Materials, Philadelphia, Pa.
- Ellis, D.V., 1987, *Well Logging for Earth Scientists*, Elsevier, New York, 532 p.
- Gardner, G.H.F., L.W. Gardner, and A.R. Gregory, 1974, Formation velocity and density; the diagnostic basics for stratigraphic traps, *Geophysics*, 39, 770-780.
- Johnson, S.Y., Tennyson, M.E., Lingley, W.S., and Law, B.E., 1993, Petroleum geology of the State of Washington: U.S. Geological Survey, Professional Paper 1582, 40 pp.
- McFarland, C.R., 1983, Oil and gas exploration in Washington, 1900-1982, Washington (State), Dept. of Natural Resources, Div. Geology and Earth Resources, Information Circular 75, 119 p.
- Palmer, S.P., and W.S. Lingley, 1989, An assessment of the oil and gas potential of the Washington outer continental shelf, Washington State & Offshore Oil and Gas, Washington Sea Grant Program, Univ. of Wash., Seattle, 83 p., 12 plates.
- Rau, W.W., and McFarland, C.R., 1982, Coastal wells of Washington: Washington Division of Geology and Earth Resources Report of Investigations 26, 4 plates.

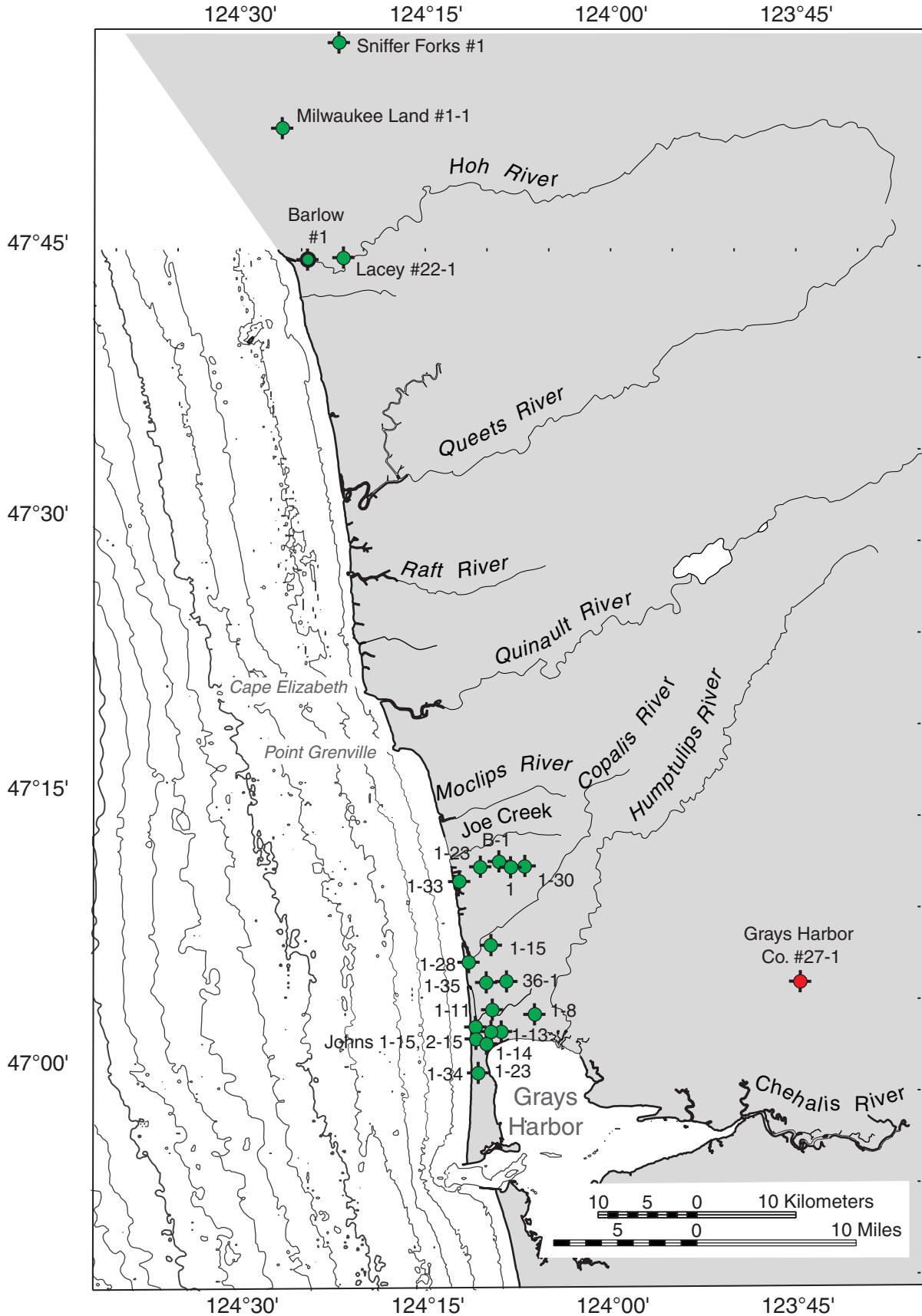


Figure 1. Map showing locations of oil test wells (circles with ticks) analyzed in this report. Bathymetric contours generated from NOAA-NOS hydrographic soundings.

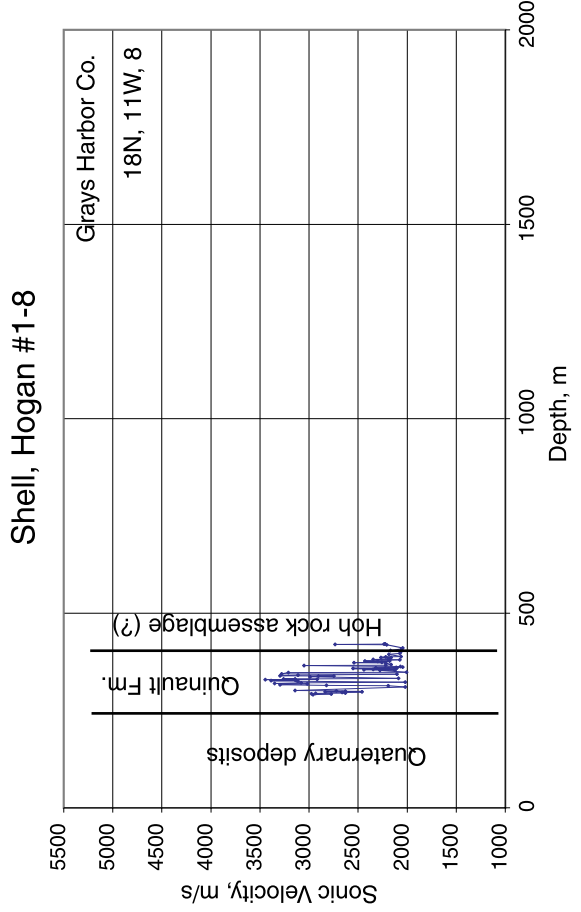
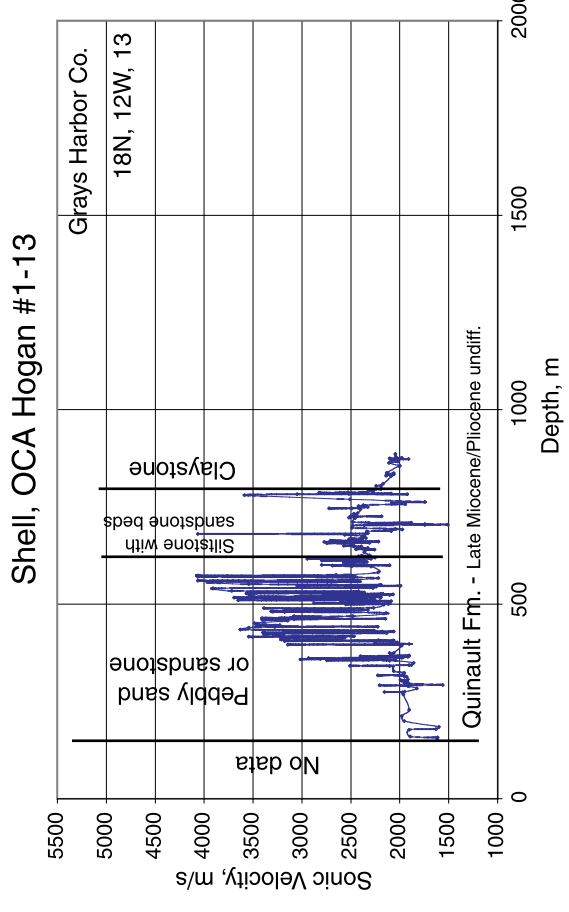
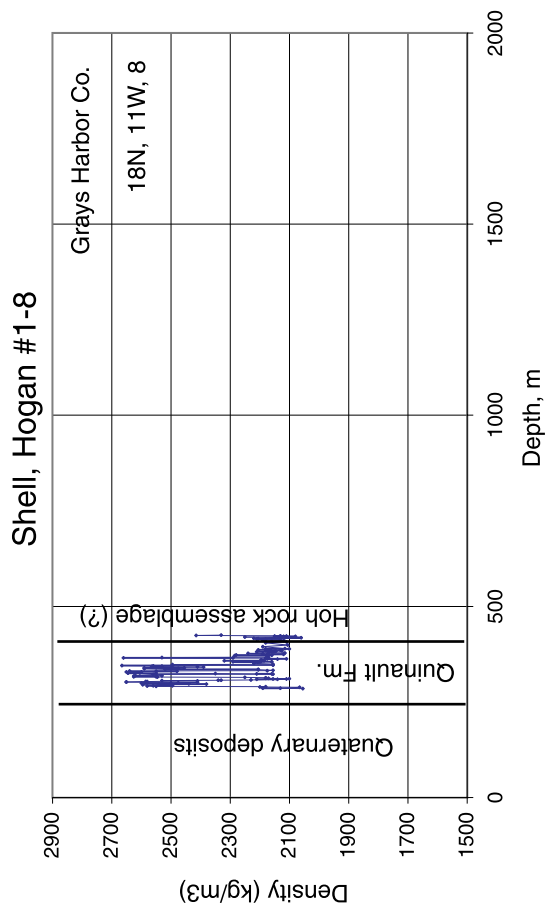
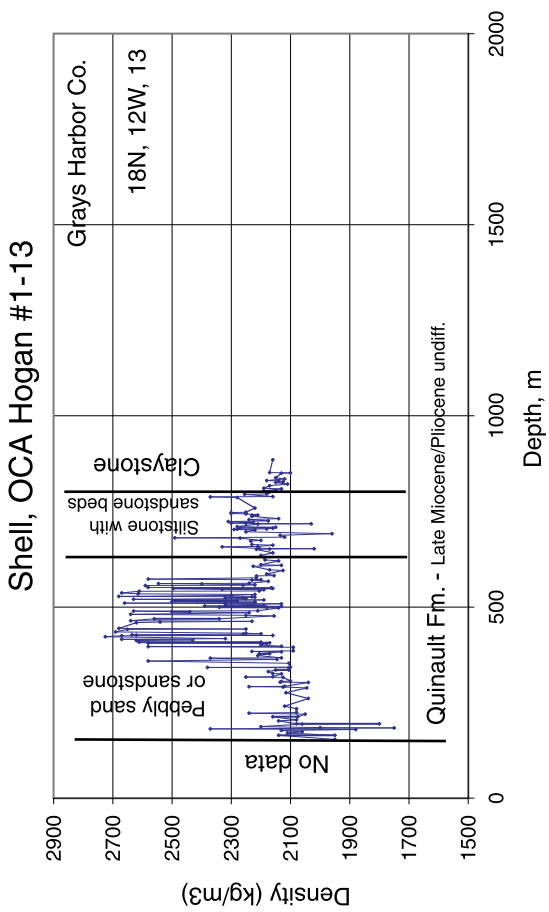
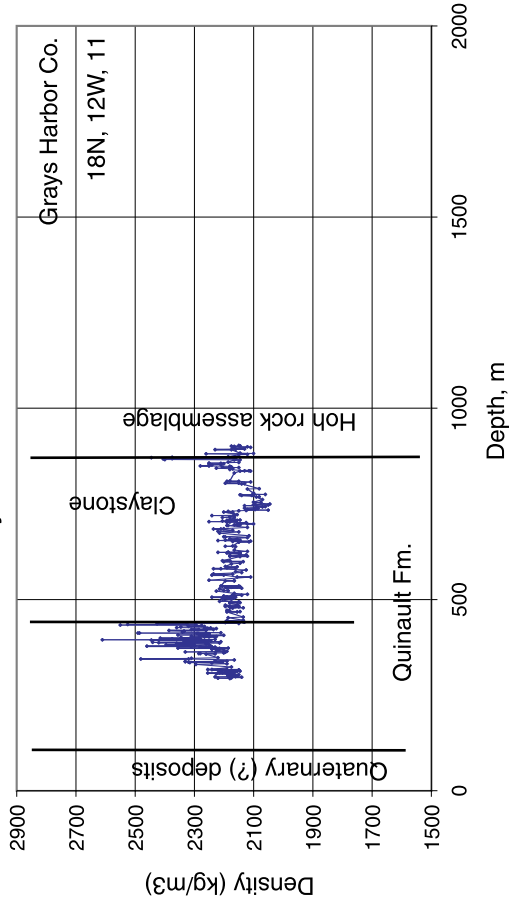
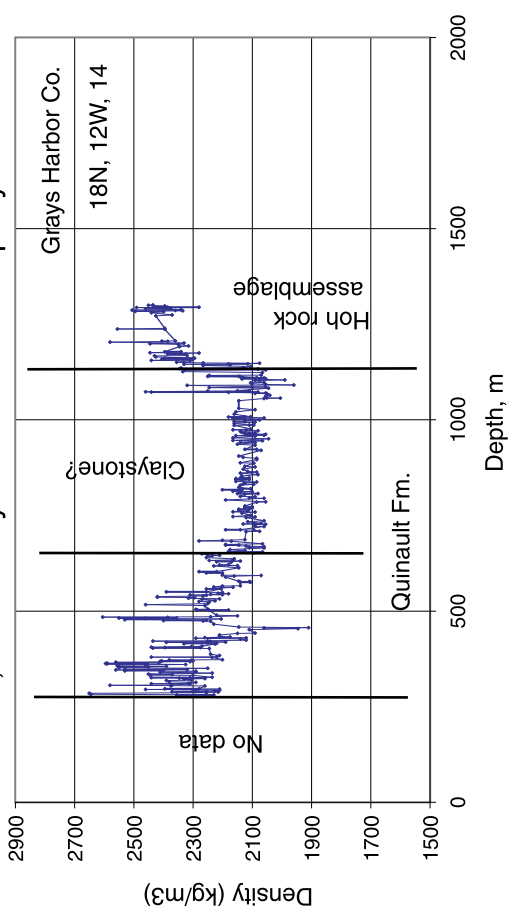


Figure 2. Sonic velocities and densities for the Shell Oil OCA Hogan 1-13 and Hogan 1-8 wells.

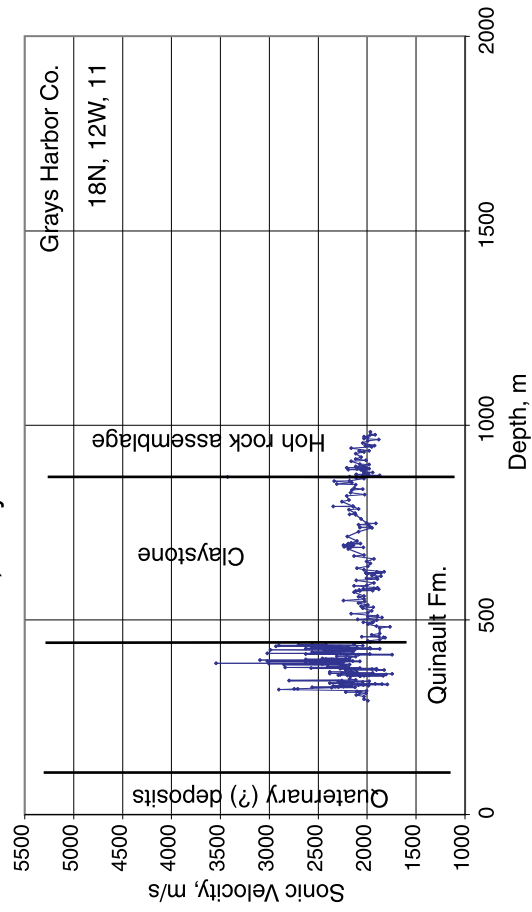
Shell, Grays Harbor Co. OCA #1-11



Shell, Ocean City Land Level. Company #1-14



Shell, Grays Harbor OCA #1-11



Shell, Ocean City Land Level. Company #1-14

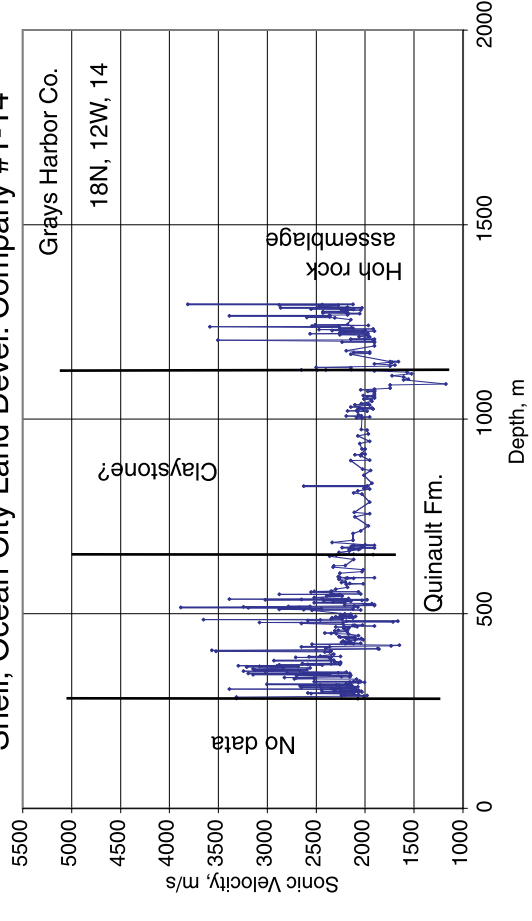
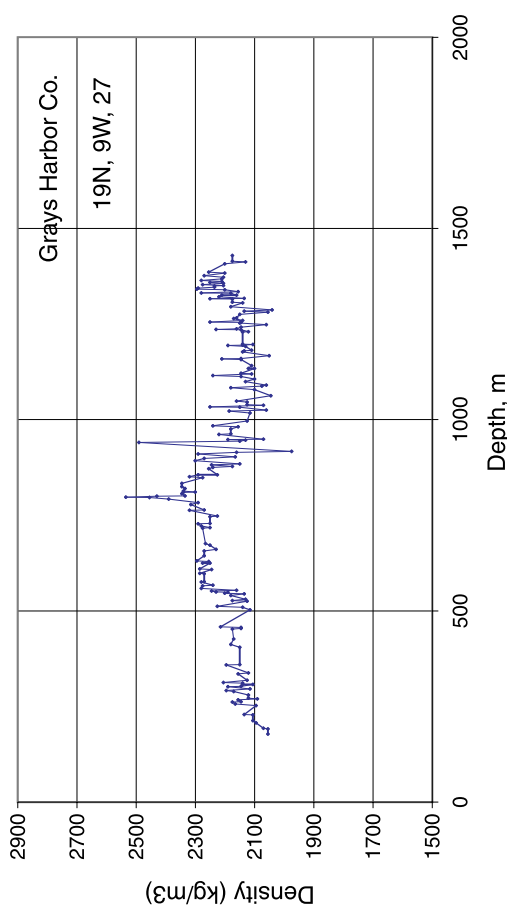
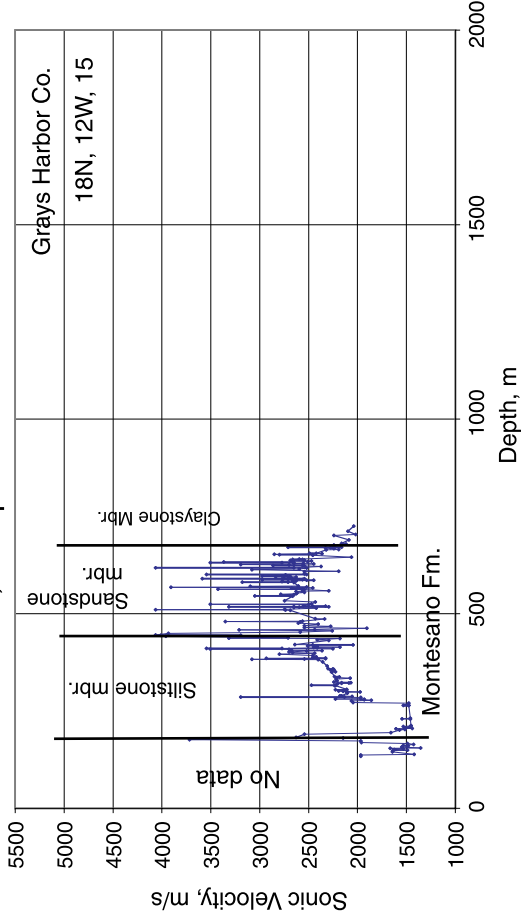


Figure 3. Sonic velocities and densities for the Shell Oil Grays Harbor County OCA 1-11 and Ocean City Land Development Co. 1-14 wells.

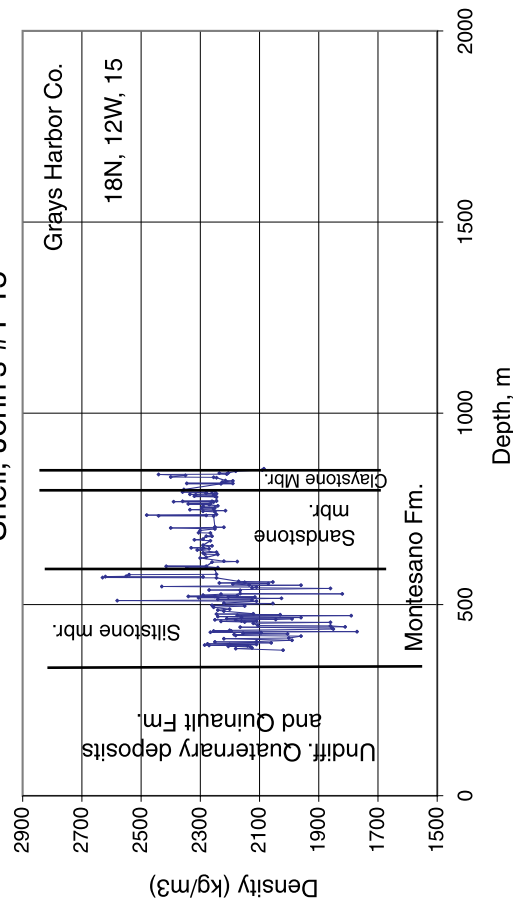
El Paso Prod., Grays Harbor Co. #27-1



Shell, Sampson Johns OCA #2-15



Shell, John's #1-15



Shell, John's #1-15

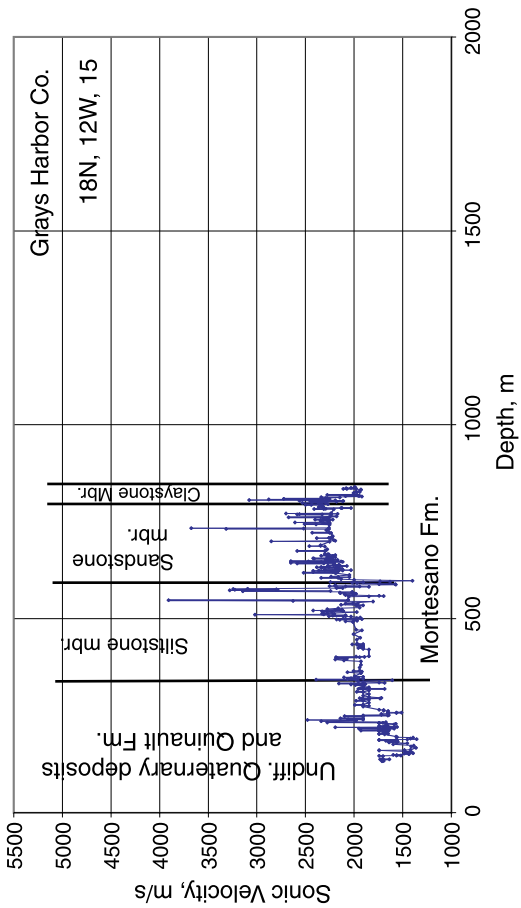


Figure 4. Sonic velocities and densities for the Shell Oil Johnson Sampson 1-15 and 2-15 and the El Paso Prod. Grays Harbor County 27-1 wells.

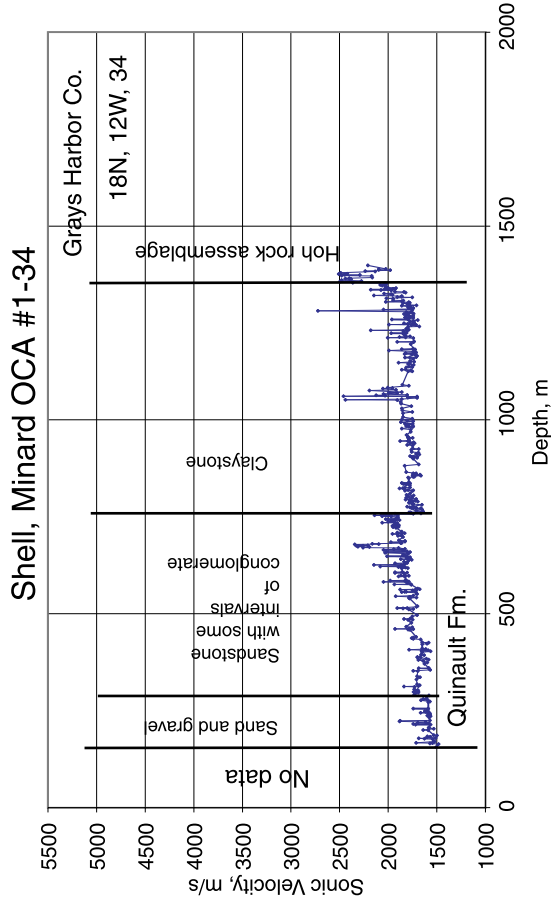
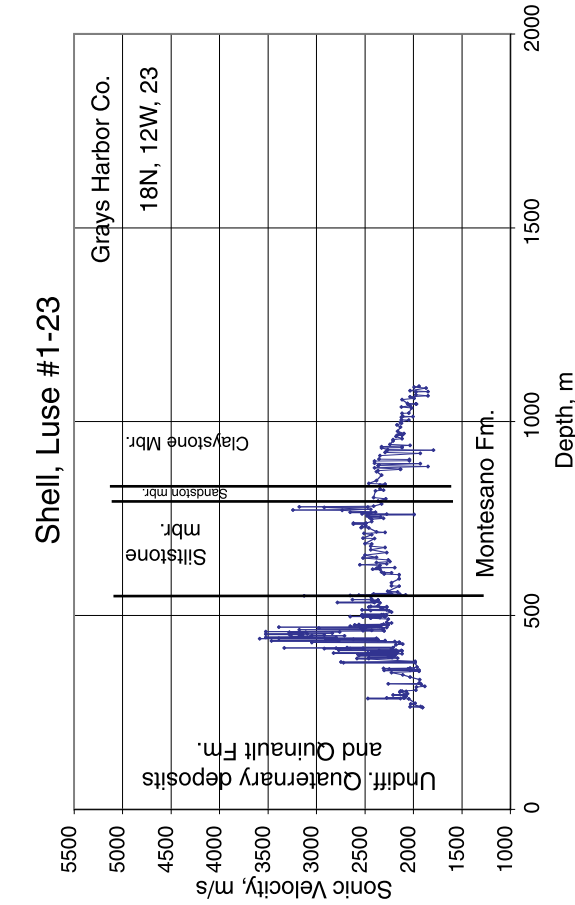
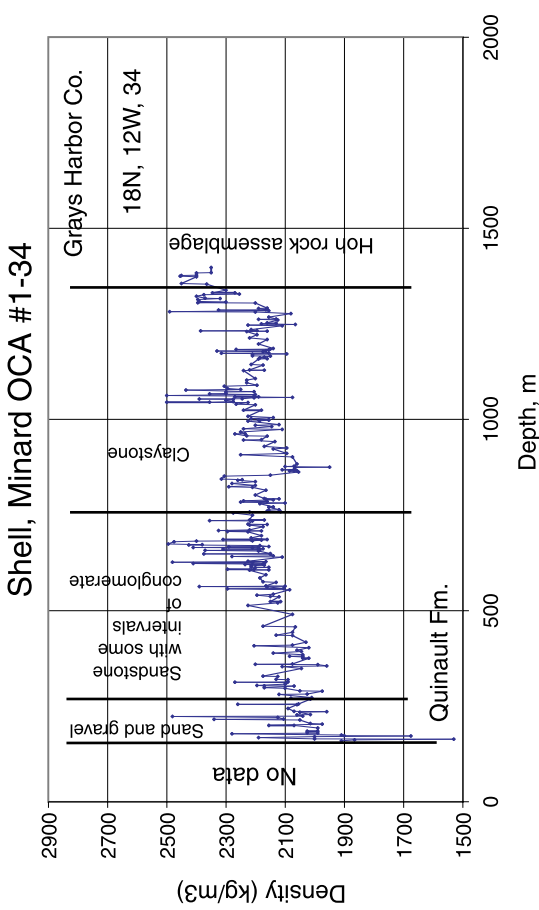
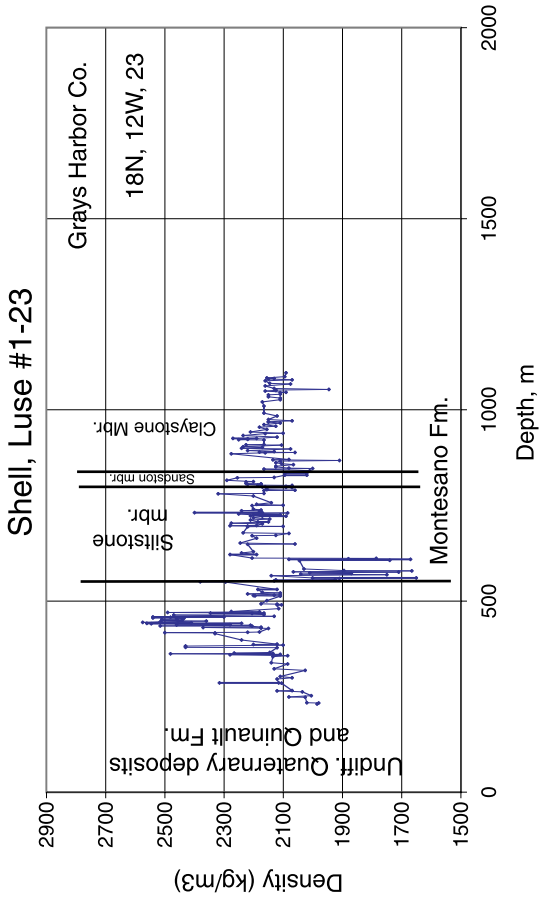
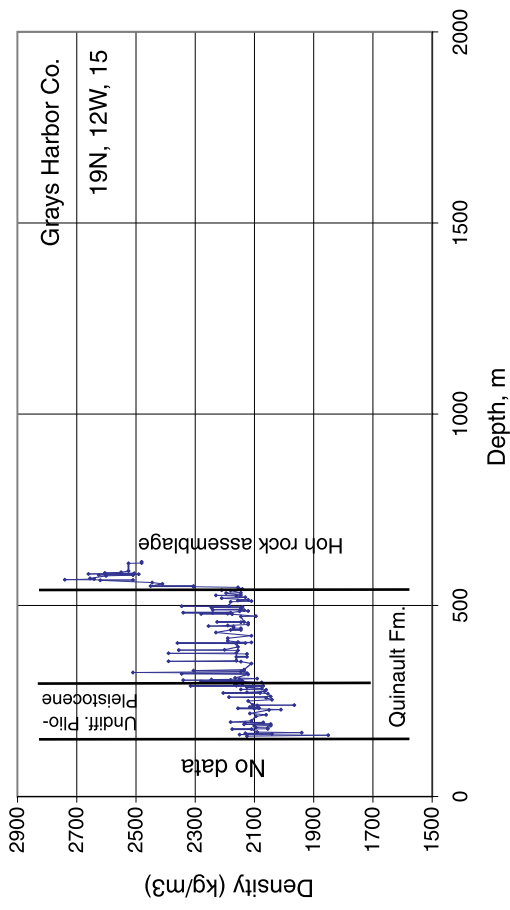
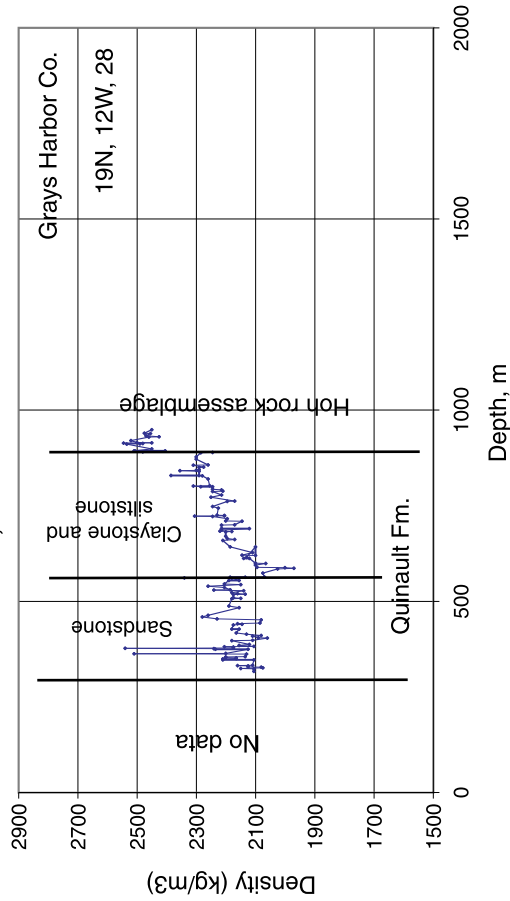


Figure 5. Sonic velocities and densities for the Shell Oil Luse 1-23 and Minard OCA 1-34 wells.

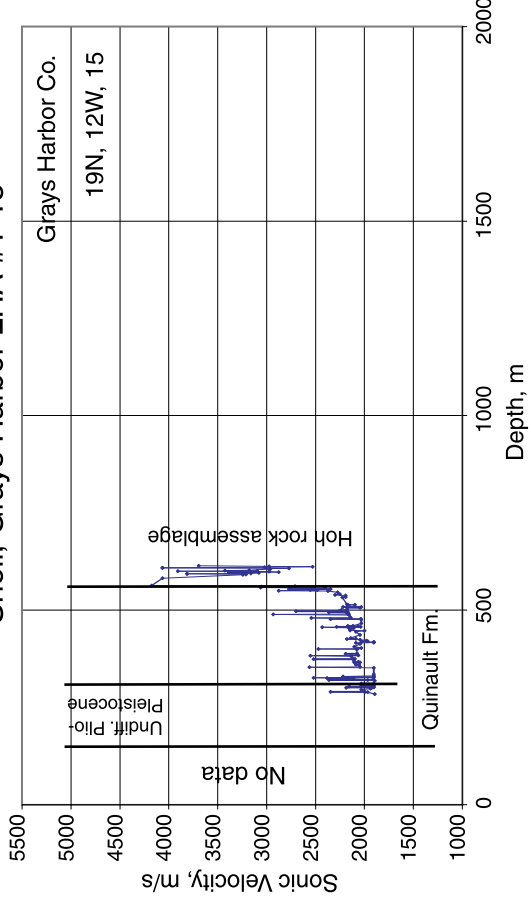
Shell, Grays Harbor Co. LHA #1-15



Shell, Trambitas OCA #1-28



Shell, Grays Harbor LHA #1-15



Shell, Trambitas OCA #1-28

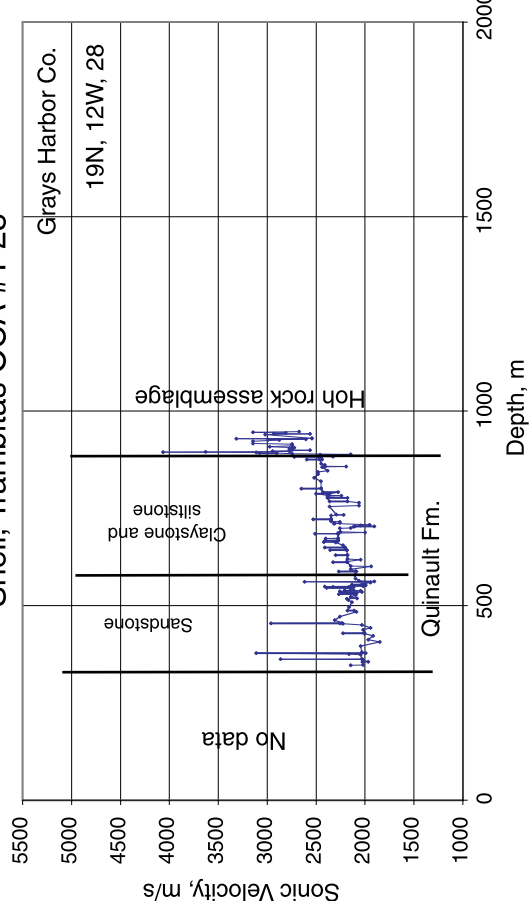
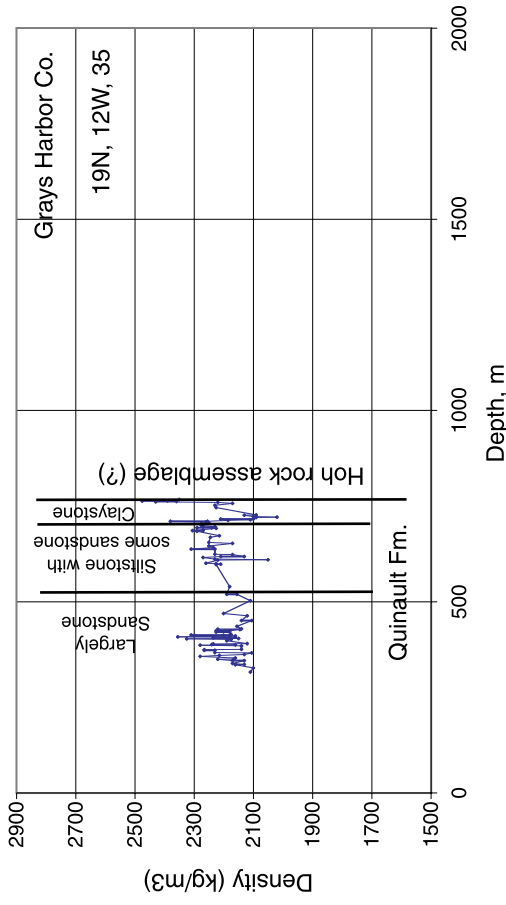
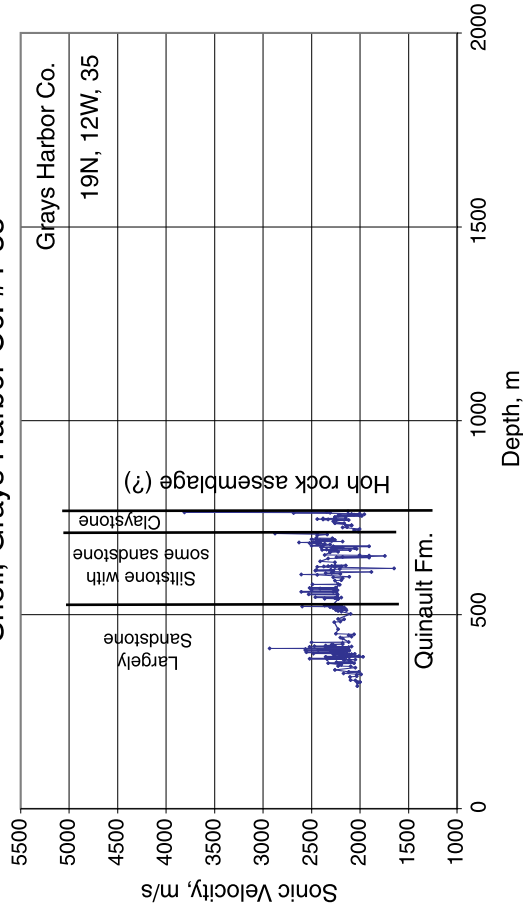


Figure 6. Sonic velocities and densities for the Shell Oil Grays Harbor County LHA 1-15 and Trambitas OCA 1-28 wells.

Shell, Grays Harbor Co. #1-35



Shell, Grays Harbor Co. #1-35



El Paso Prod., Grays Harbor Co. #36-1

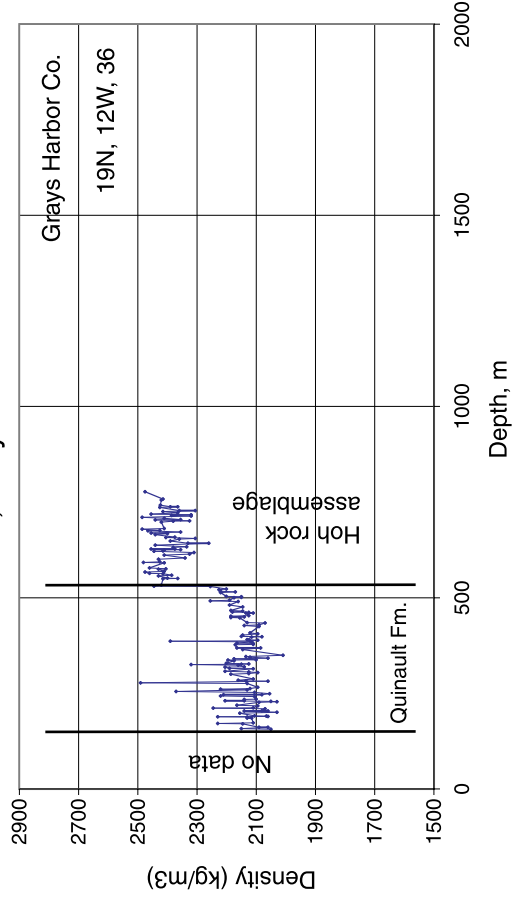
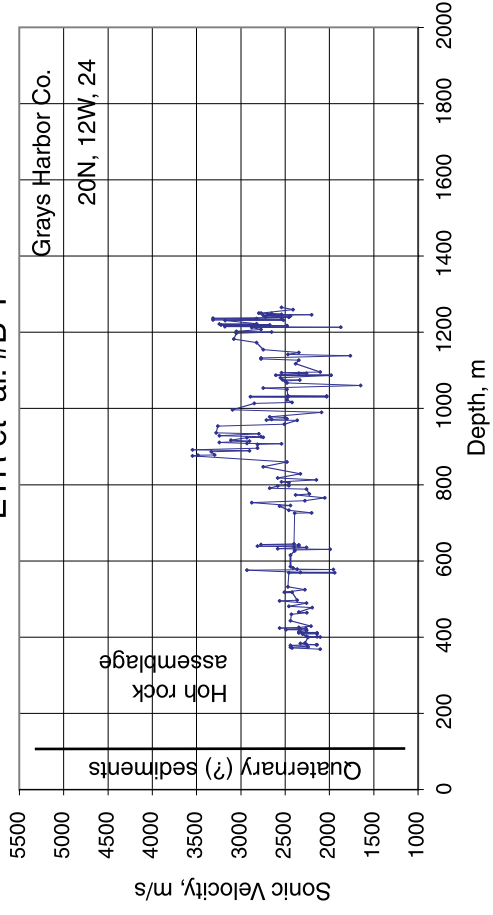


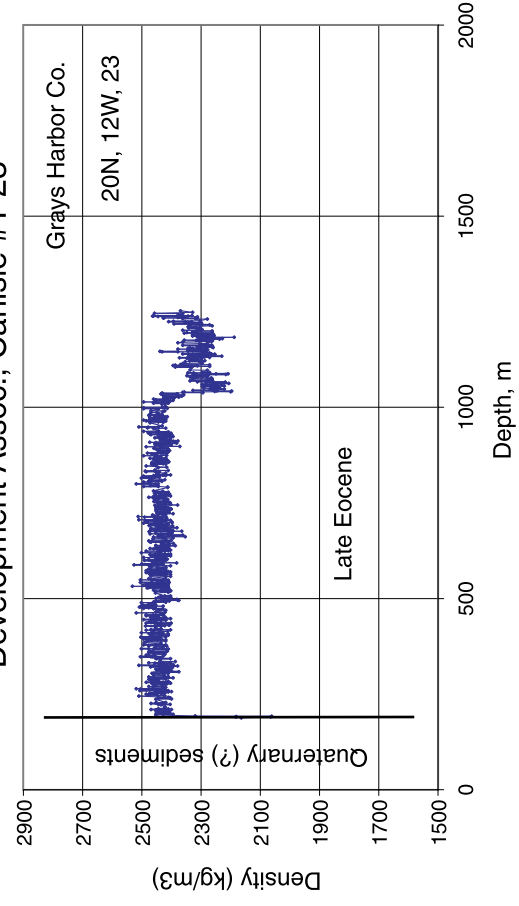
Figure 7. Sonic velocities and densities for the Shell Oil Grays Harbor County 1-35 and El Paso Prod., Grays Harbor County 36-1 wells.

Humble Oil, Everett Trust and Savings Bank

ETR et al. #B-1



Development Assoc., Carlisle #1-23



Development Assoc., M A Baker #1-30

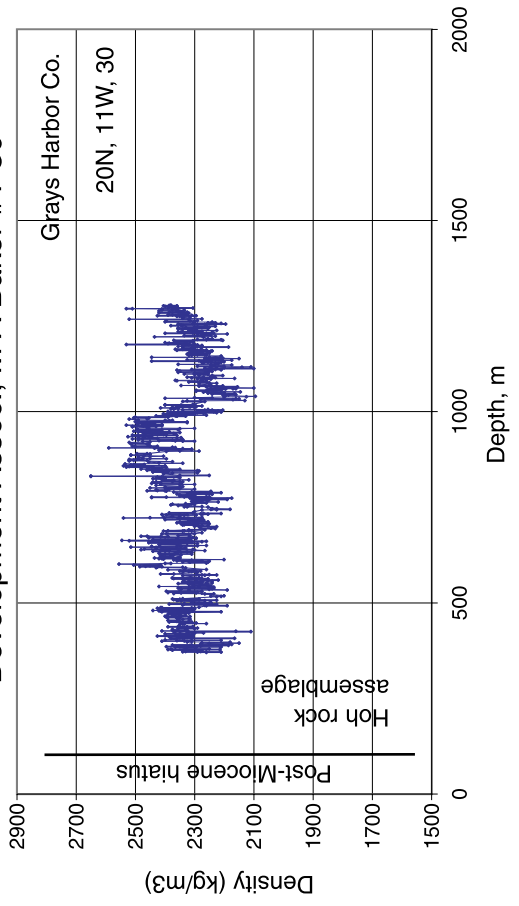
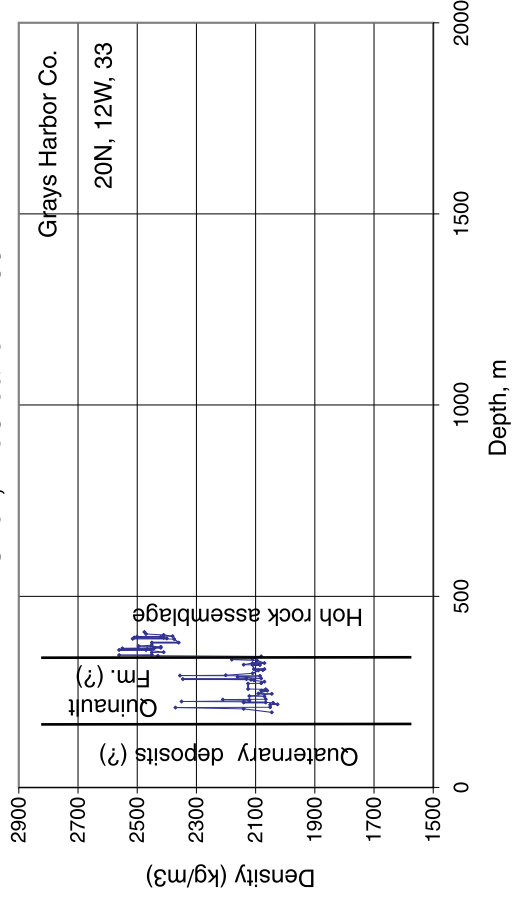
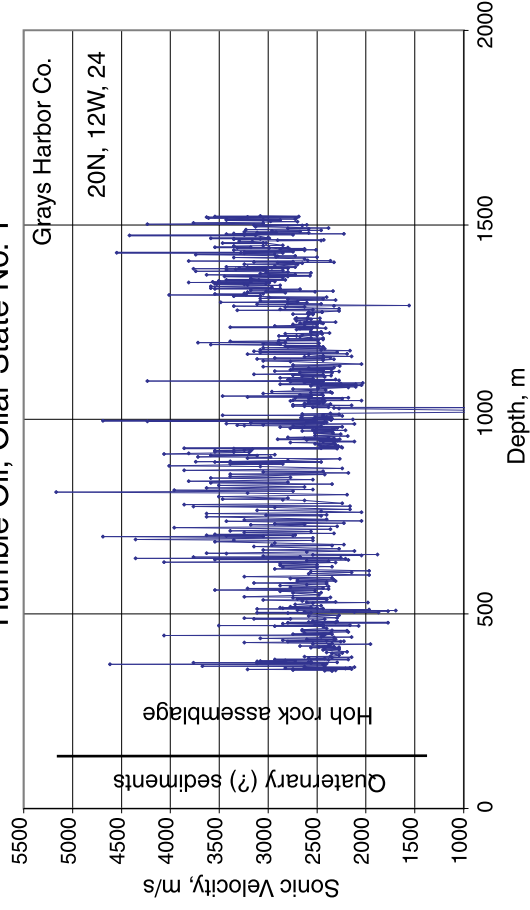


Figure 8. Sonic velocities and densities for the Development Assoc. M A Baker 1-20 and Carlisle 1-23 wells and Humble Oil Everett Trust and Savings Bank ETR et al. B-1 well.

Shell, McCleave #1-33



Humble Oil, Ollar State No. 1



Shell, McCleave #1-33

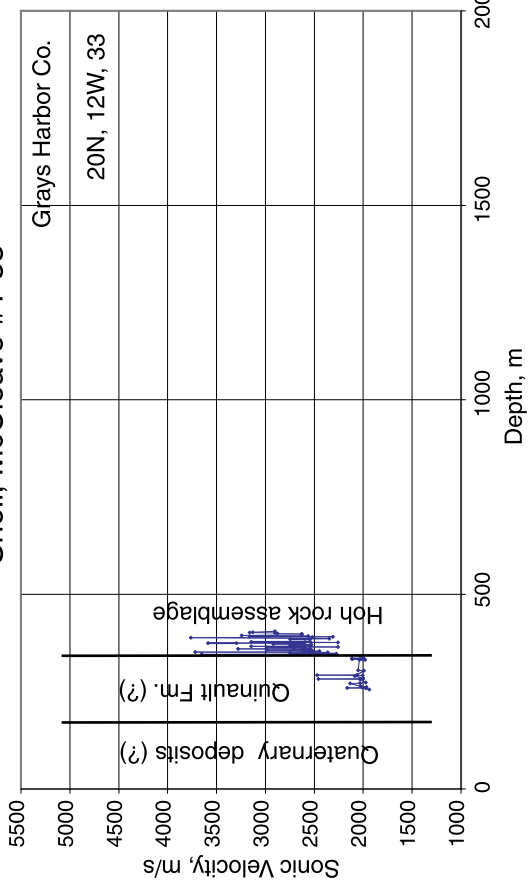


Figure 9. Sonic velocities and densities for the Humble Oil Ollar State 1 and Shell Oil McCleave 1-33 wells.

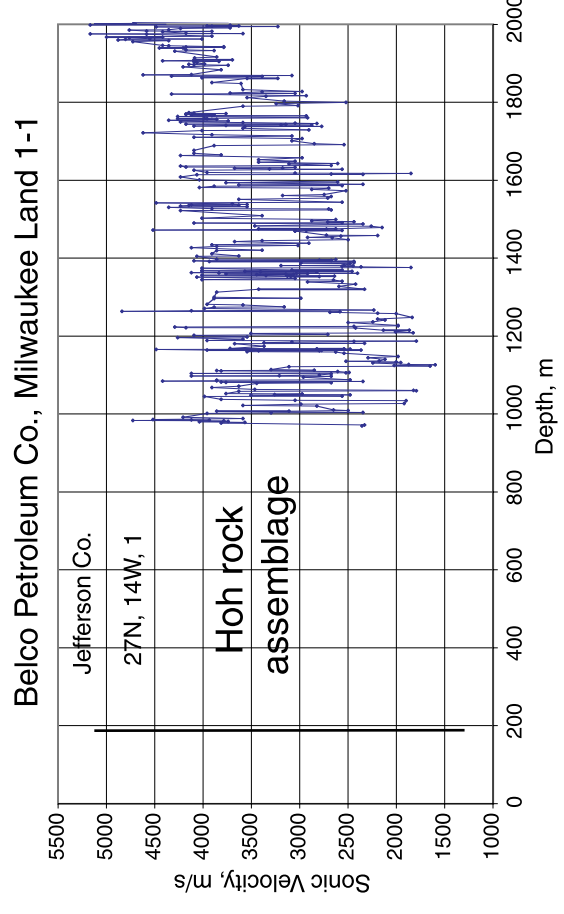
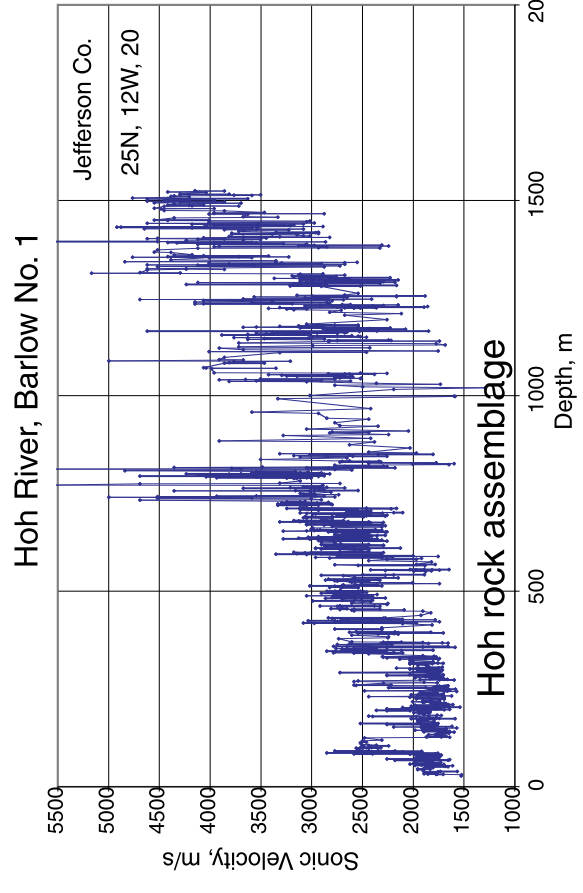
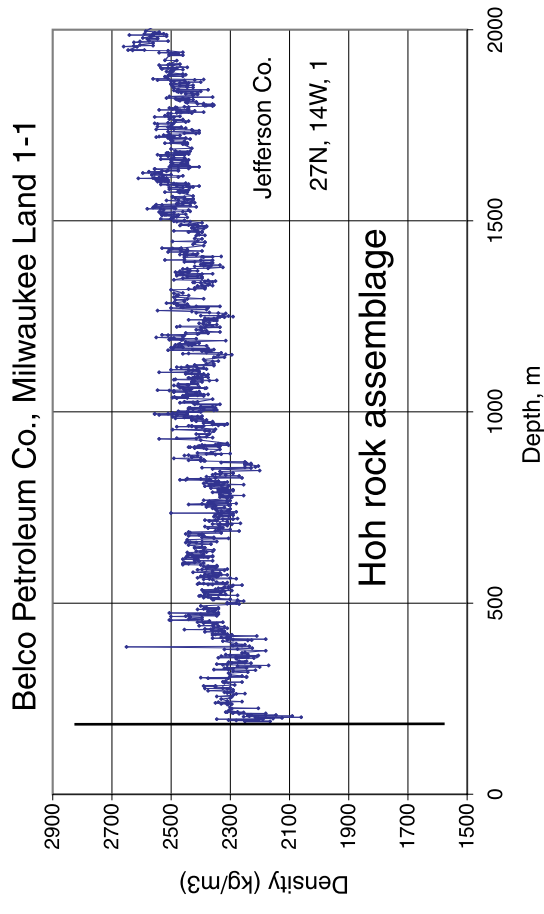
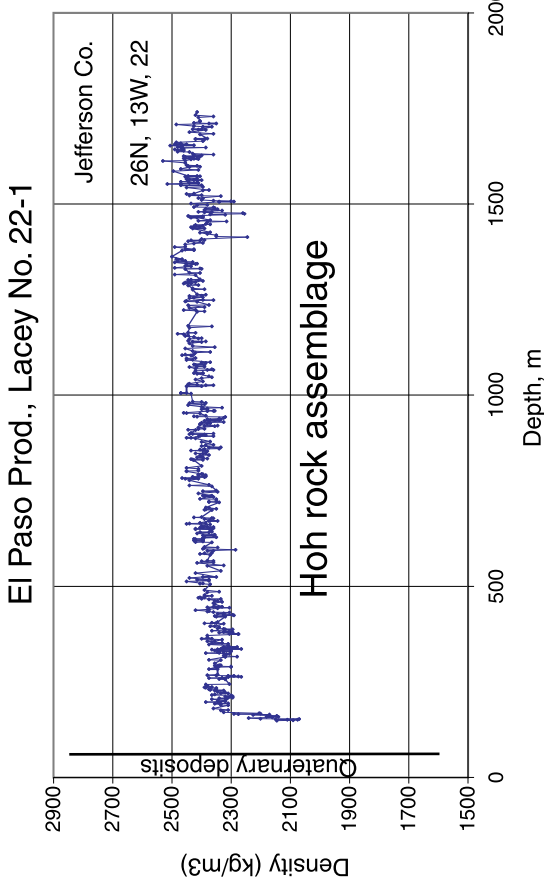


Figure 10. Sonic velocities and densities for the Hoh River Oil Barlow 1, El Paso Prod. Lacey 22-1, and Belco Petroleum Corp. Milwaukee Land 1-1 wells.

Eastern Petrol. Service, Forks Sniffer #1

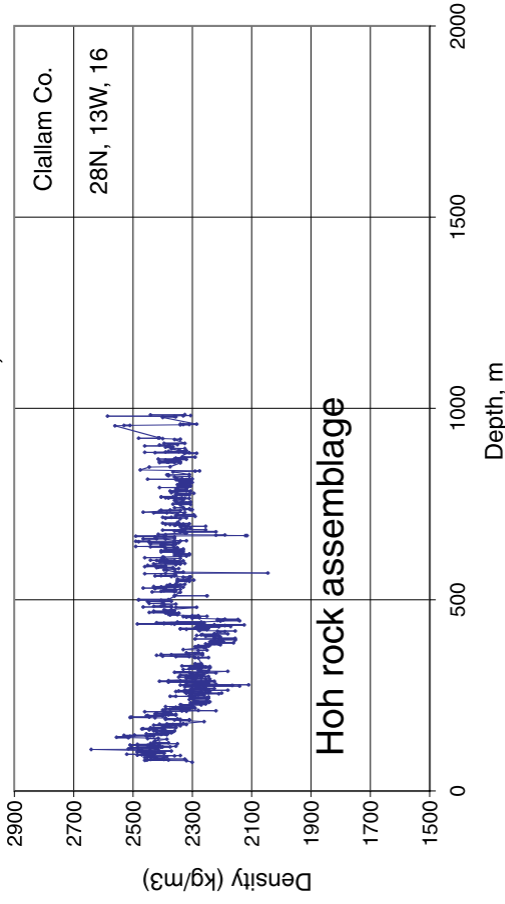
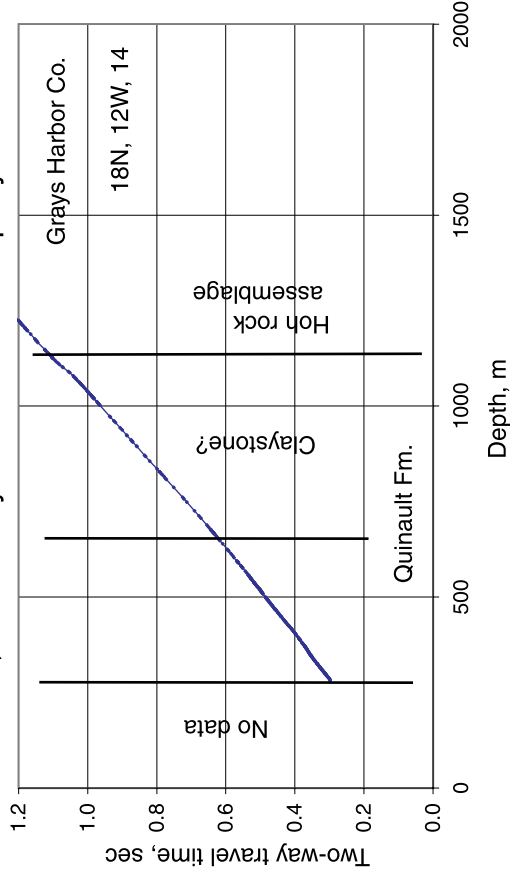
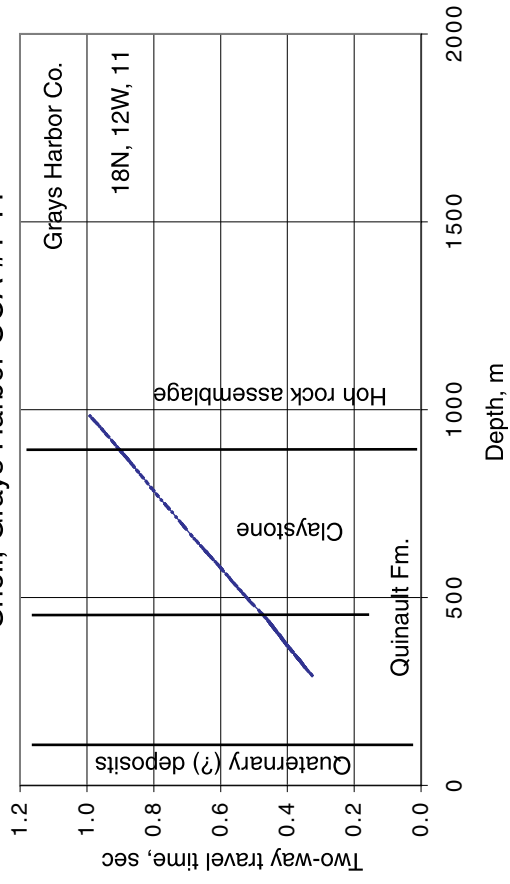


Figure 11. Densities for the Eastern Petroleum Services Sniffer Forks 1 well.

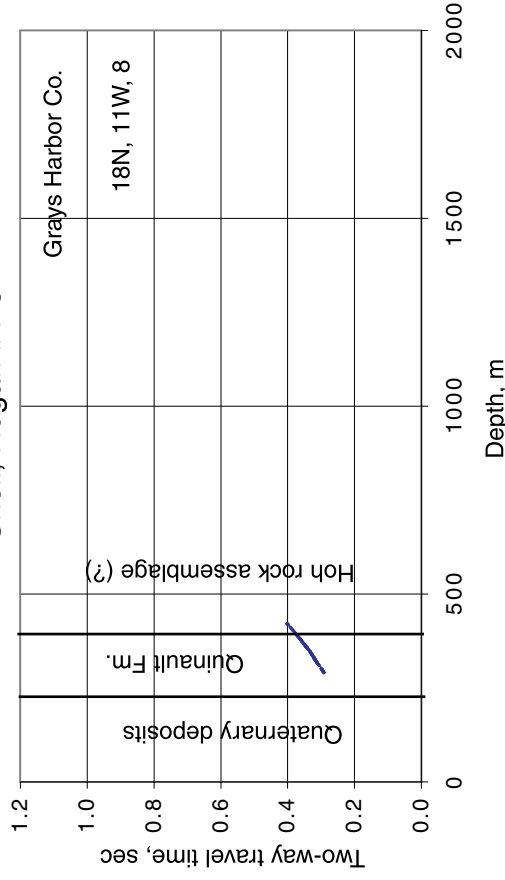
Shell, Ocean City Land Devel. Company #1-14



Shell, Grays Harbor OCA #1-11



Shell, Hogan #1-8



Shell, OCA Hogan #1-13

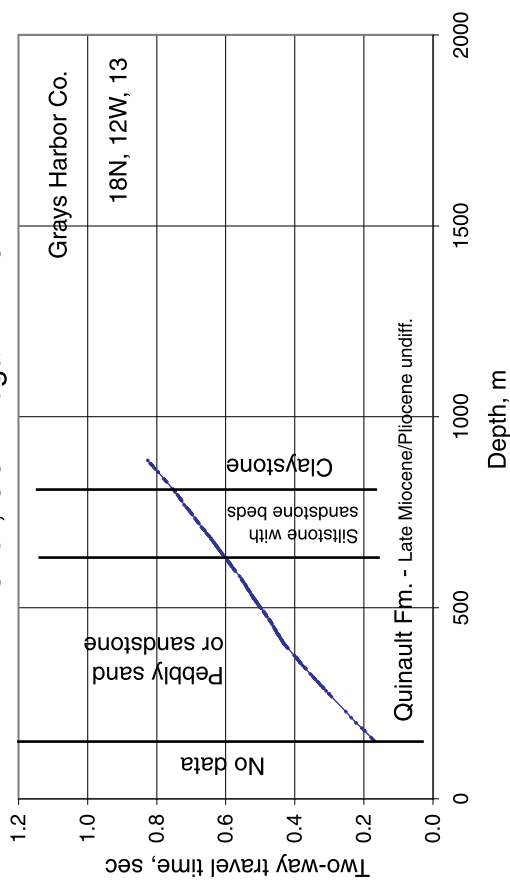


Figure 12. Calculated two-way travel times for the Shell Oil OCA Hogan 1-13, Hogan 1-8, Grays Harbor County 1-11, and Ocean City LDC 1-14 wells.

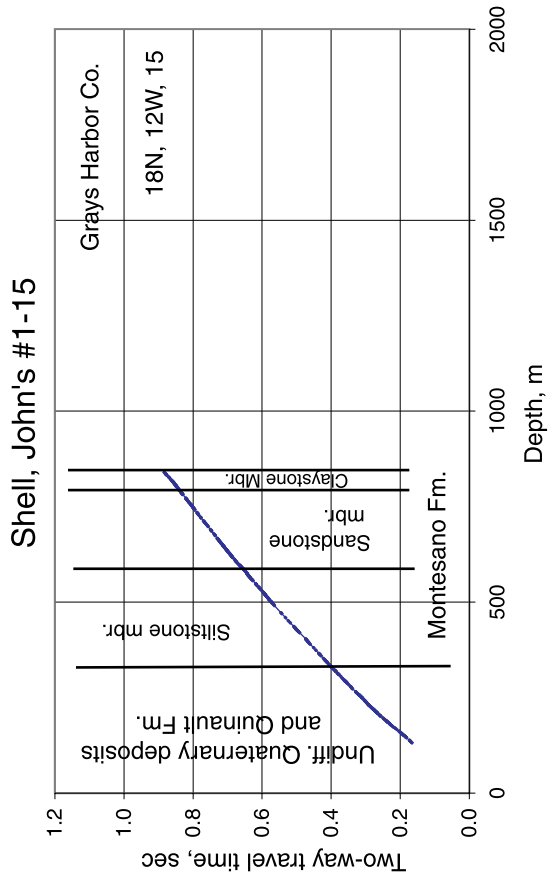
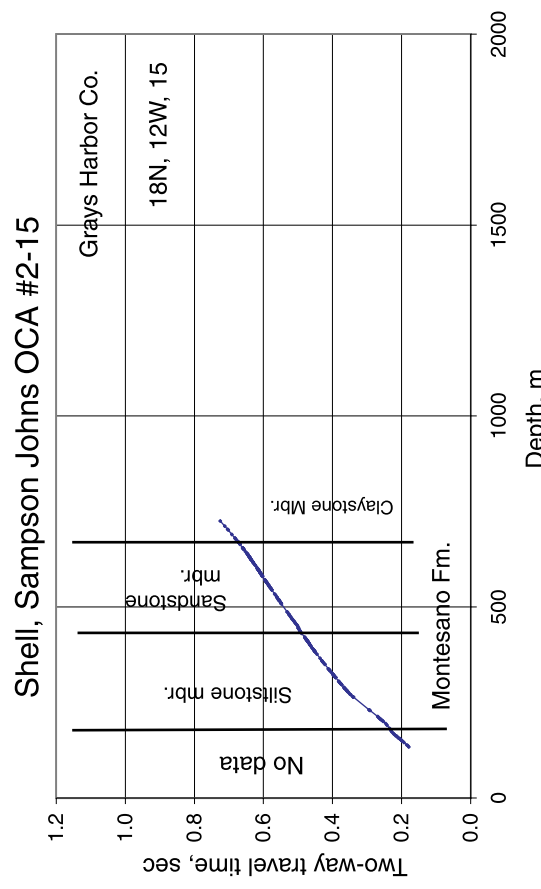
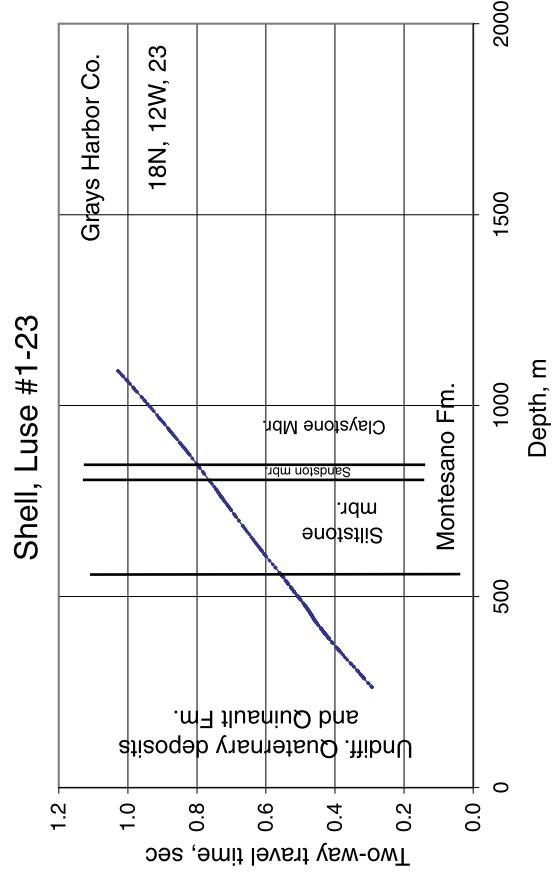
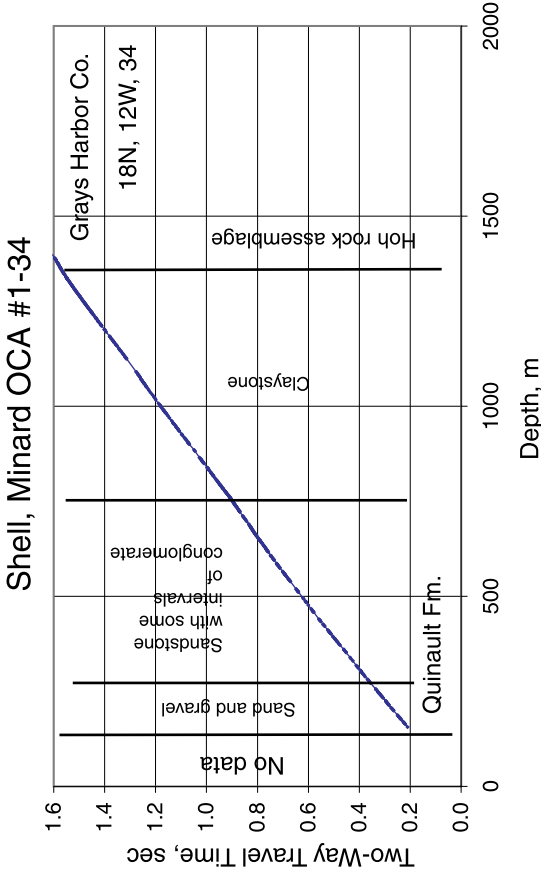


Figure 13. Calculated two-way travel times for the Shell Oil John Sampson 1-15, John Sampson OCA 2-15, Luse 1-23, and Minard OCA 1-34 wells.

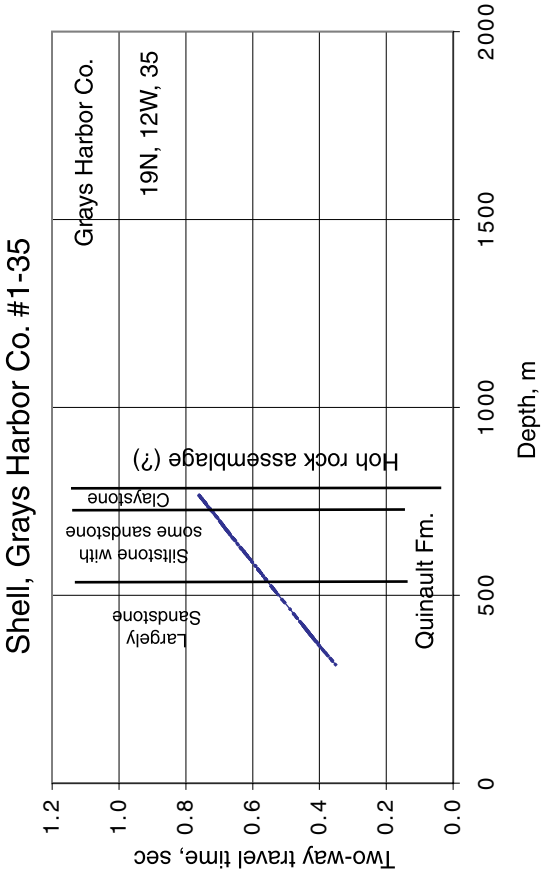
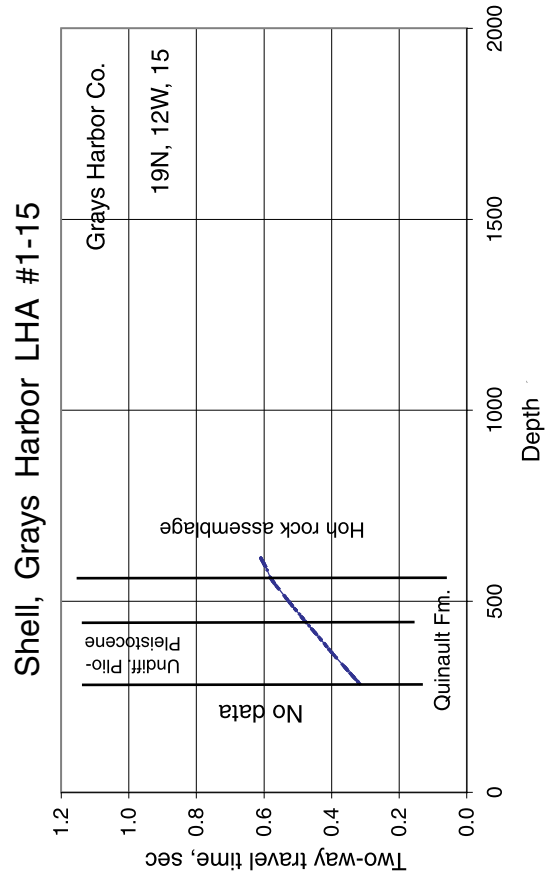
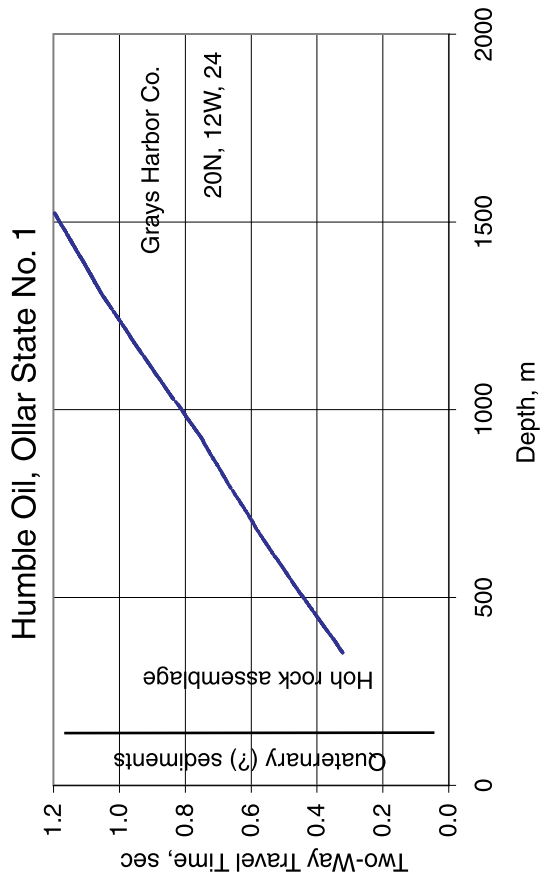
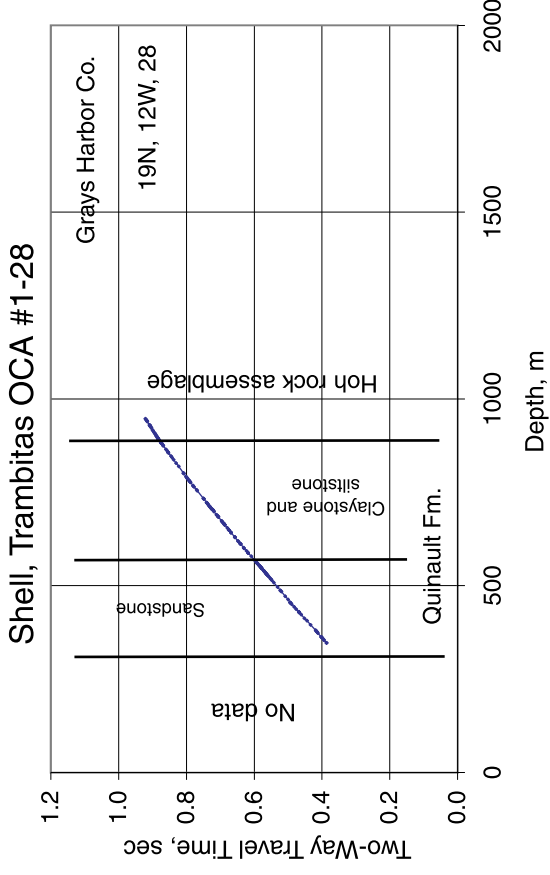


Figure 14. Calculated two-way travel times for the Shell Oil Grays Harbor County LHA 1-15, Trambitas OCA 1-28, Grays Harbor County 1-35, and Humble Oil Ollar State 1 wells.

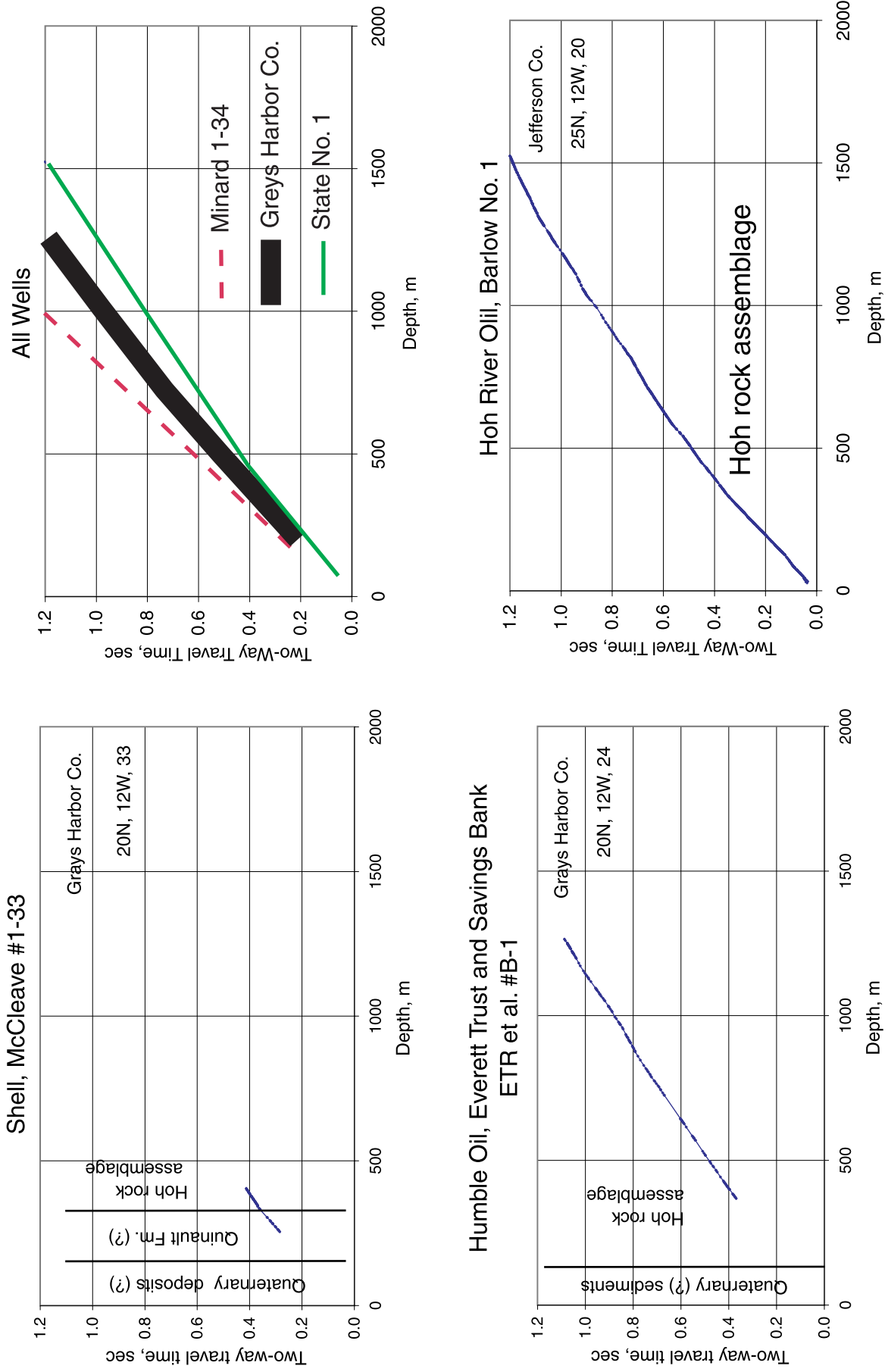


Figure 15. Calculated two-way travel times for the Humble Oil State B-1, Shell Oil McCleave 1-33, and Hoh River Oil Barlow 1 wells. Figure in upper right hand corner summarizes the calculated two way travel times for all the wells.

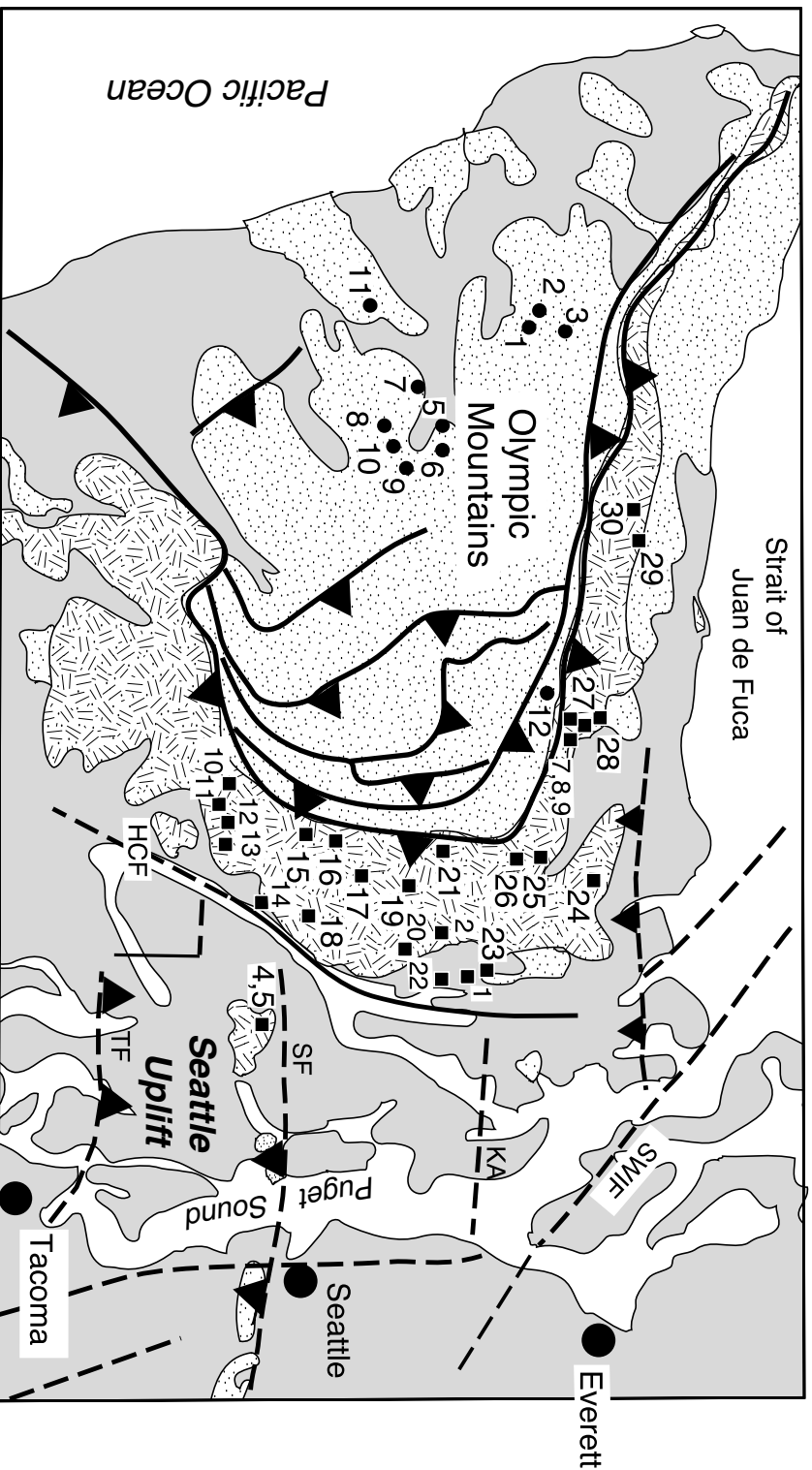


Figure 16. Map of the Olympic Peninsula showing the rock samples whose compressional and shear waves were measured in the laboratory. Abbreviations: HCF-Hood Canal fault, KA-Kingston Arch, SF-Seattle fault, TF-Tacoma fault. Figure modified from Brocher et al. (2001).

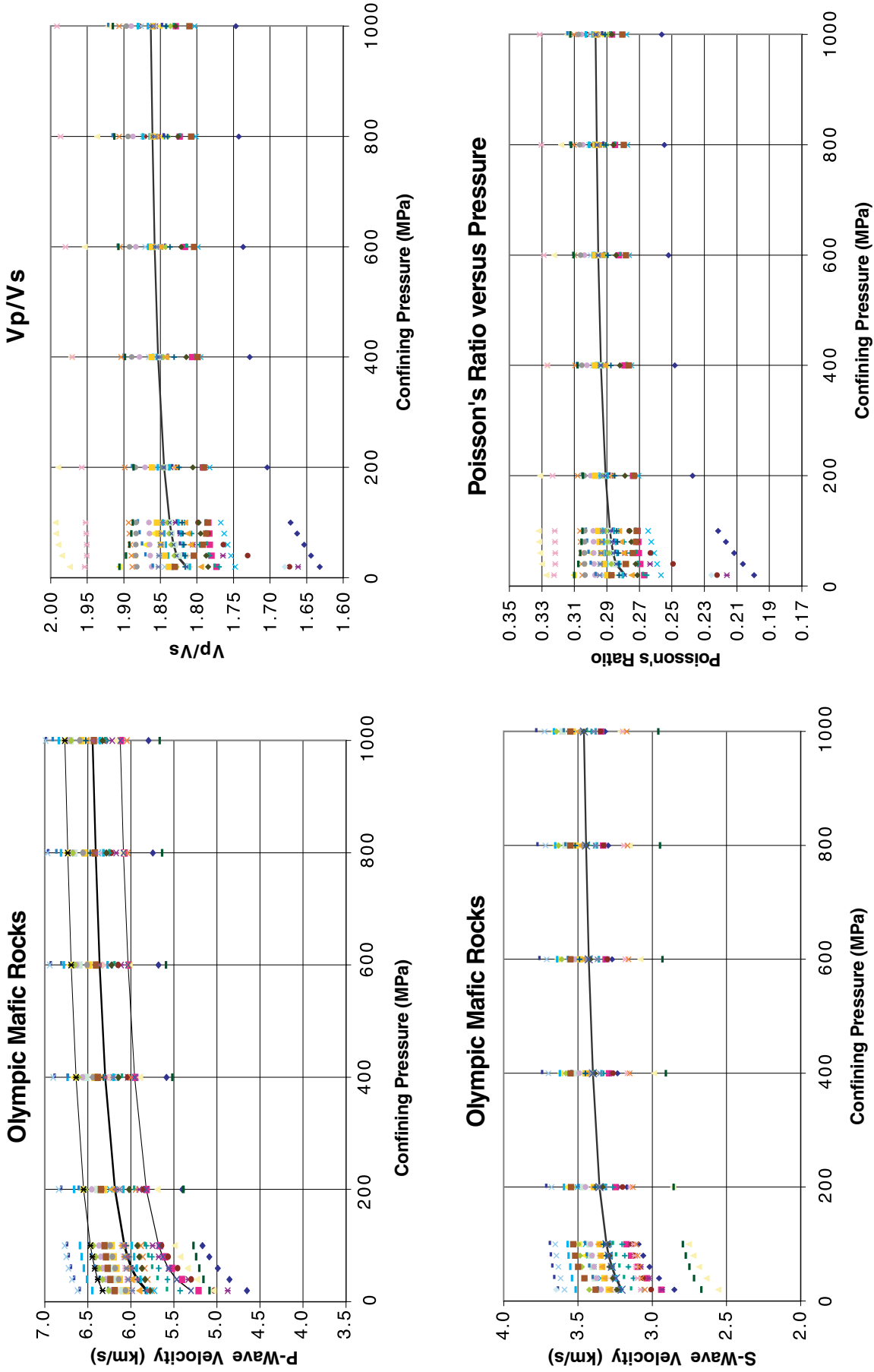


Figure 17. Compressional-wave, shear-wave, Vp/Vs ratio, and Poisson's ratio versus confining pressure for Olympic Peninsula mafic rocks (mainly Crescent Formation volcanics).

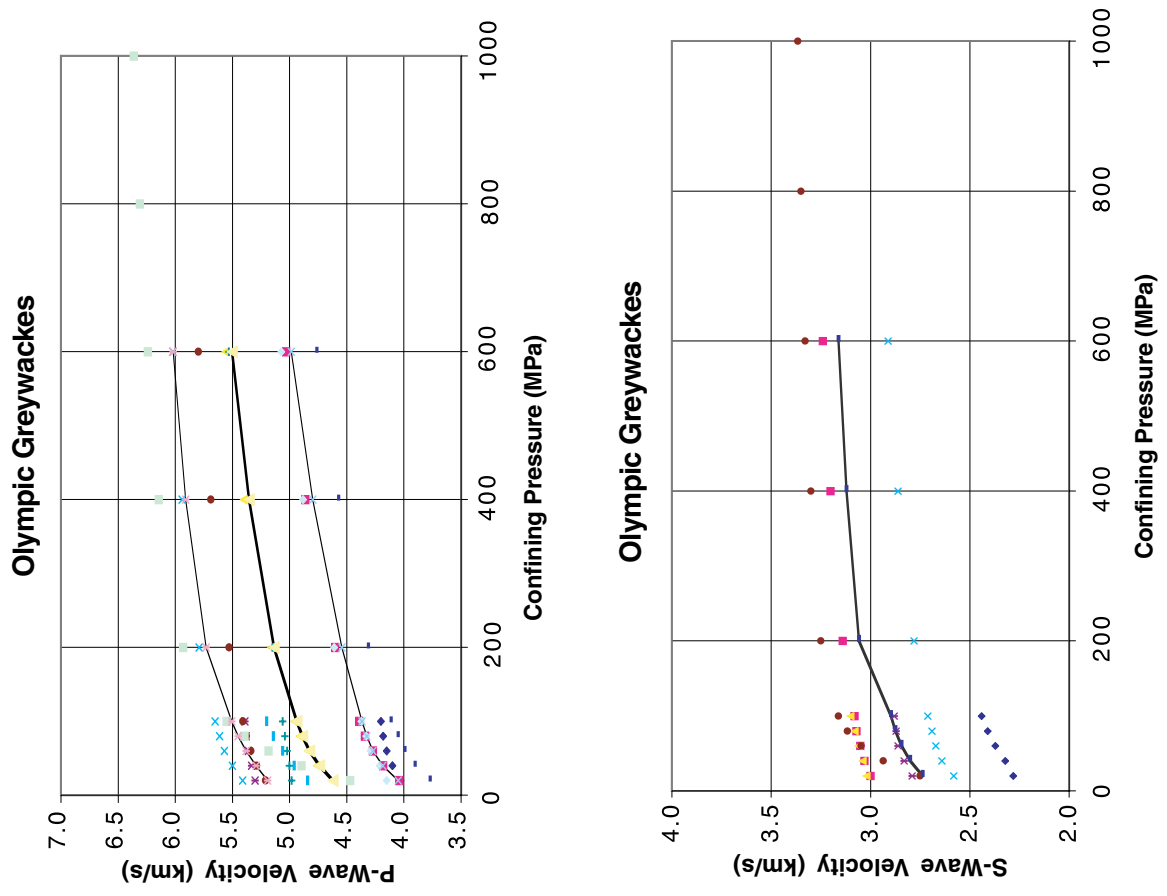
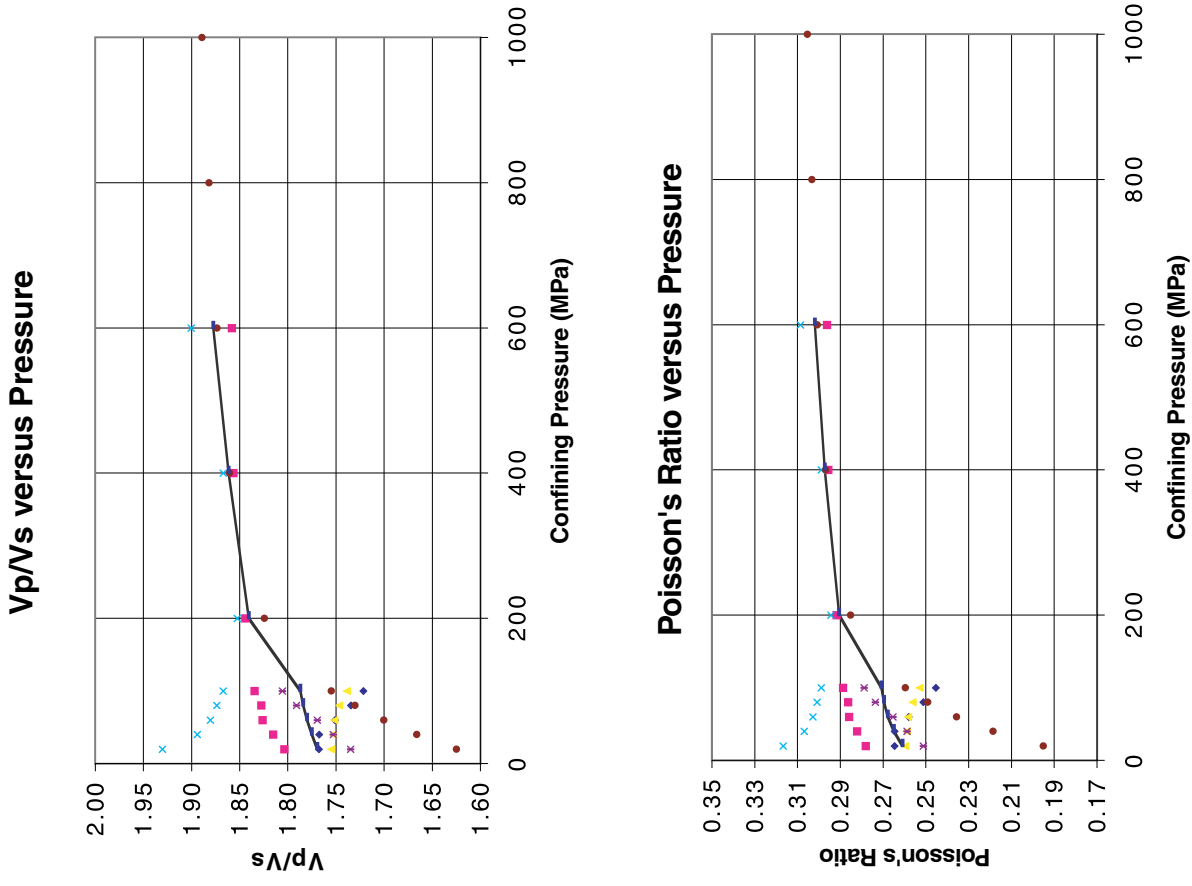


Figure 18. Compressional-wave, shear-wave, Vp/Vs ratio, and Poisson's ratio versus confining pressure for Olympic Peninsula greywackes.

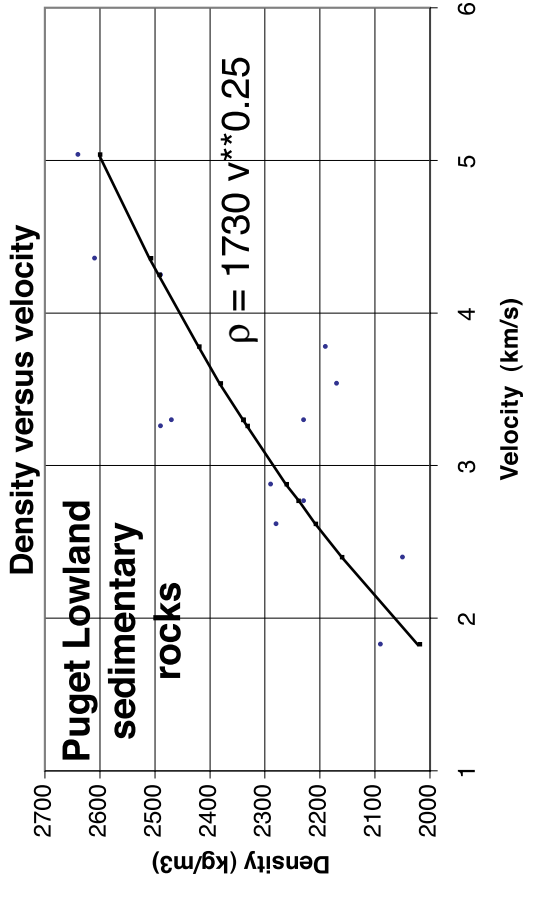
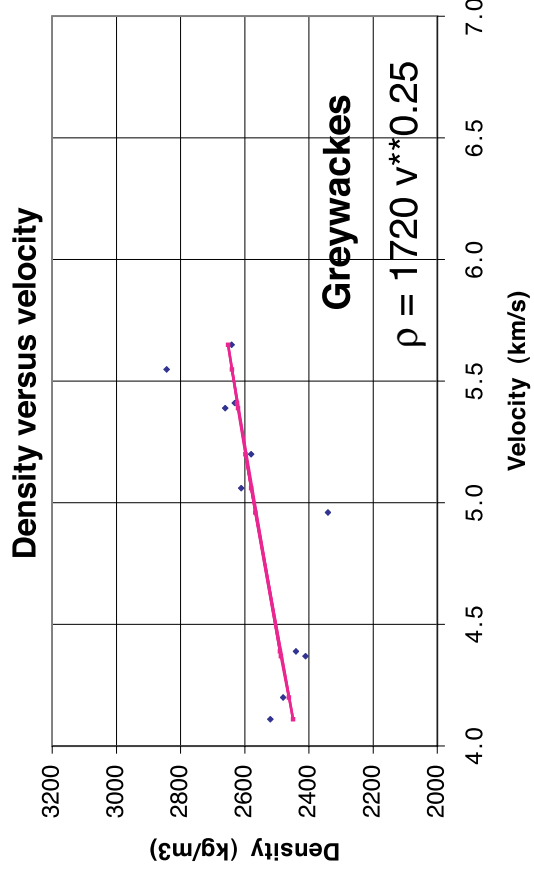
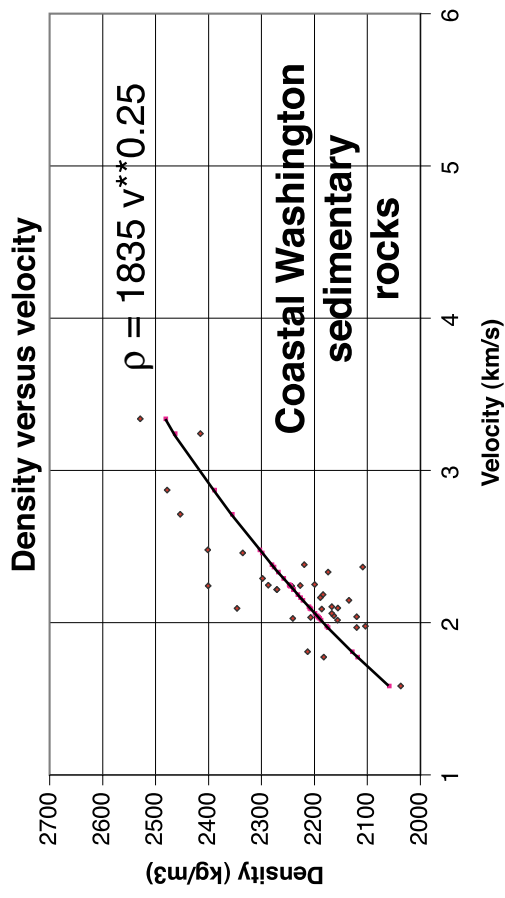
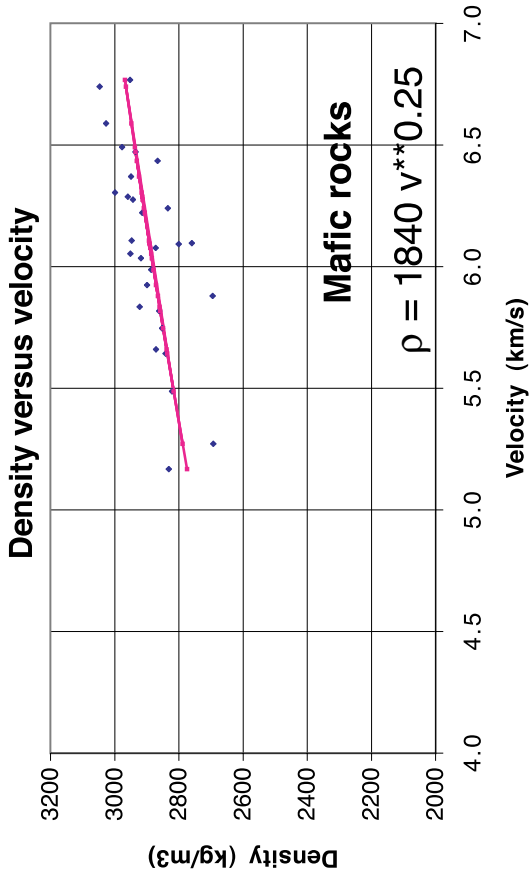


Figure 19. Density and velocity relationships for the Olympic Peninsula mafic and greywackes (left side), as well as for average sonic velocities and densities for the borehole logs presented here for coastal Washington, and for the Puget Lowland by Brocher and Ruebel (1998).

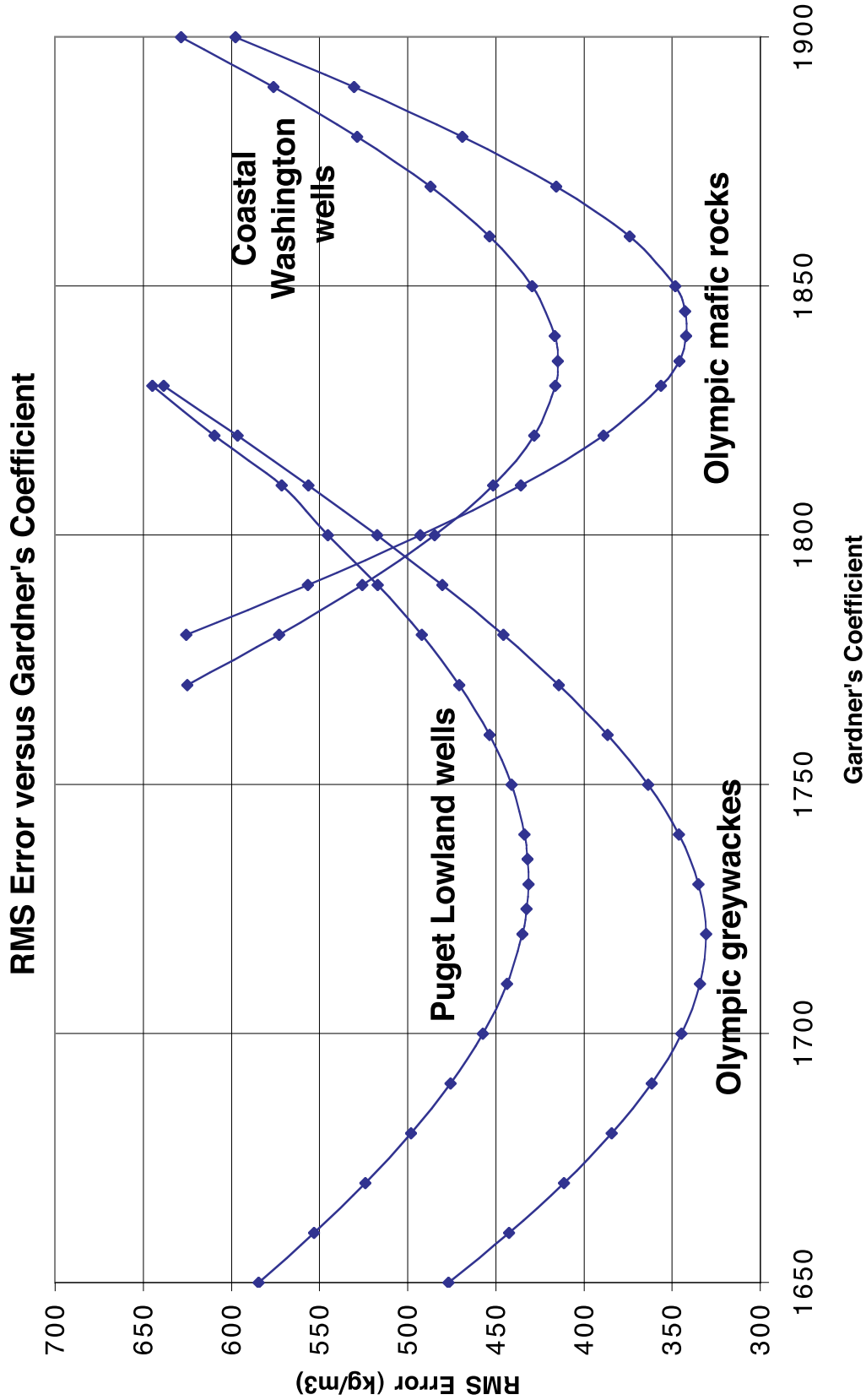


Figure 20. Graphs showing RMS misfit of the relationship $\rho = \text{Gardner's coefficient} * v^{*0.25}$ for the various suites of rocks studied here and in Brocher and Ruebel (1998).